

**Age-Standardized Rate of Diabetes (2014/15)
Both Sexes, All Ages 20+, in Central LHIN
by Neighbourhood
(Rate-Ratio map)**

Age-Standardized Rate of Diabetes (2014/15), Both Sexes, All Ages 20+ in Central LHIN

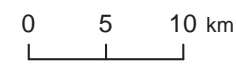
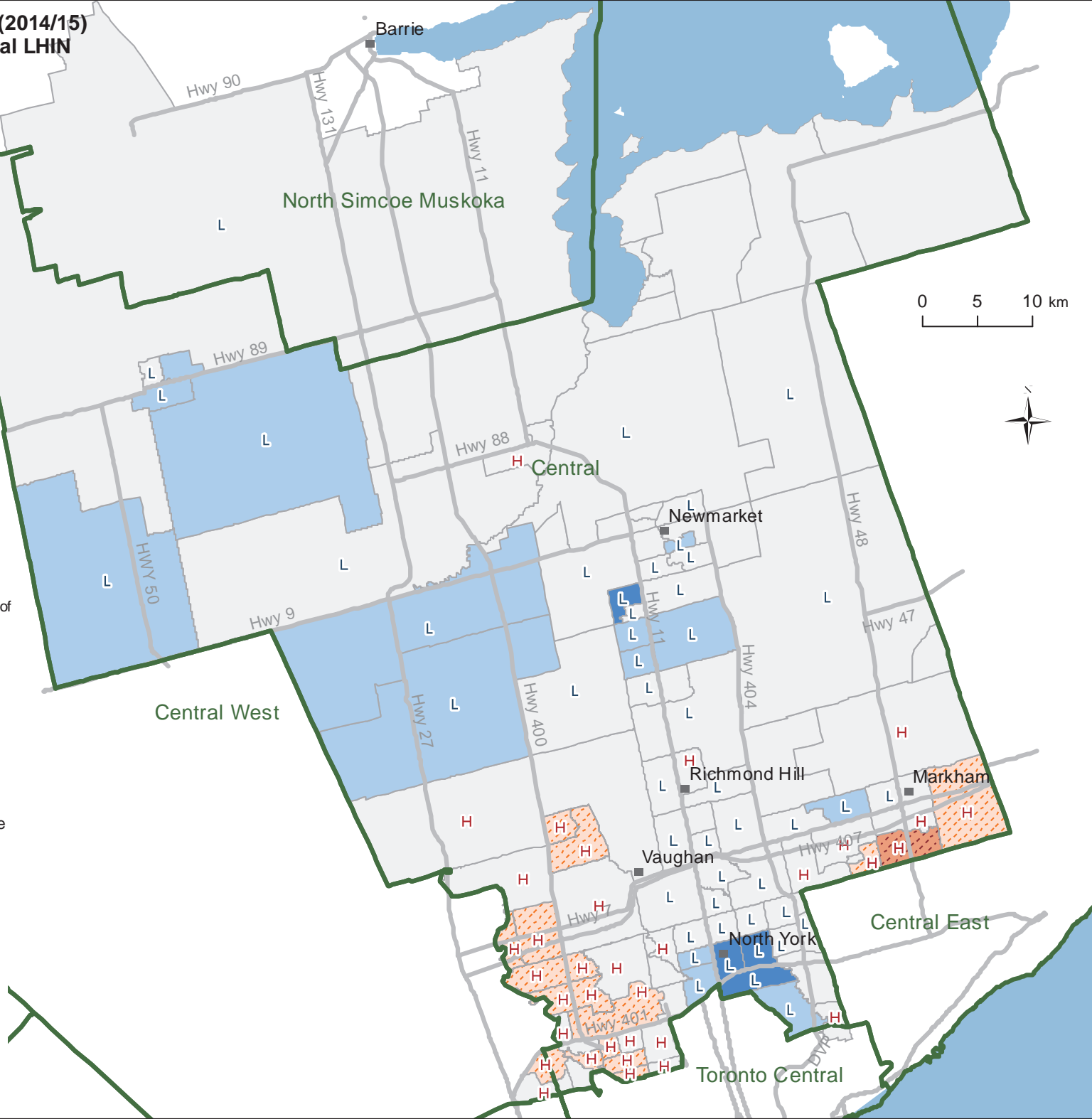
LHIN 8 rate: 10.2
Ontario rate: 9.8

Area Rate / LHIN 8 Rate (Rate Ratio)	Number of Neighb
0.65 - 0.70	4
0.71 - 0.80	13
0.81 - 1.19	71
1.20 - 1.49	16
1.50 - 1.63	1

Neighbourhood with rates statistically different ($p < 0.05$) from the LHIN-wide rate

H Value in Neighbourhood is significantly higher than the LHIN value

L Value in Neighbourhood is significantly lower than the LHIN value



Data Sources:
2015 Ontario Diabetes Database
2015 Registered Persons Database

Copyright © 2016
Ontario Community Health
Profiles Partnership
Not for commercial use