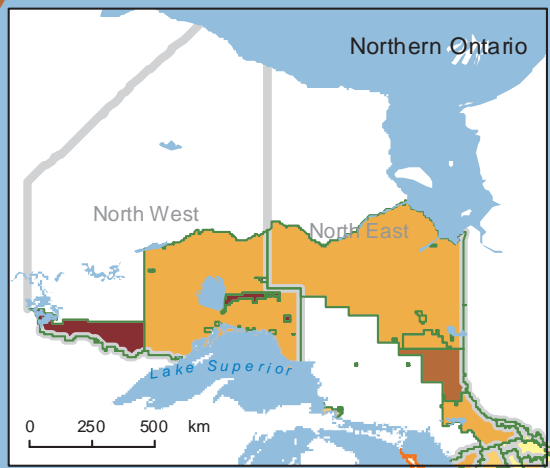
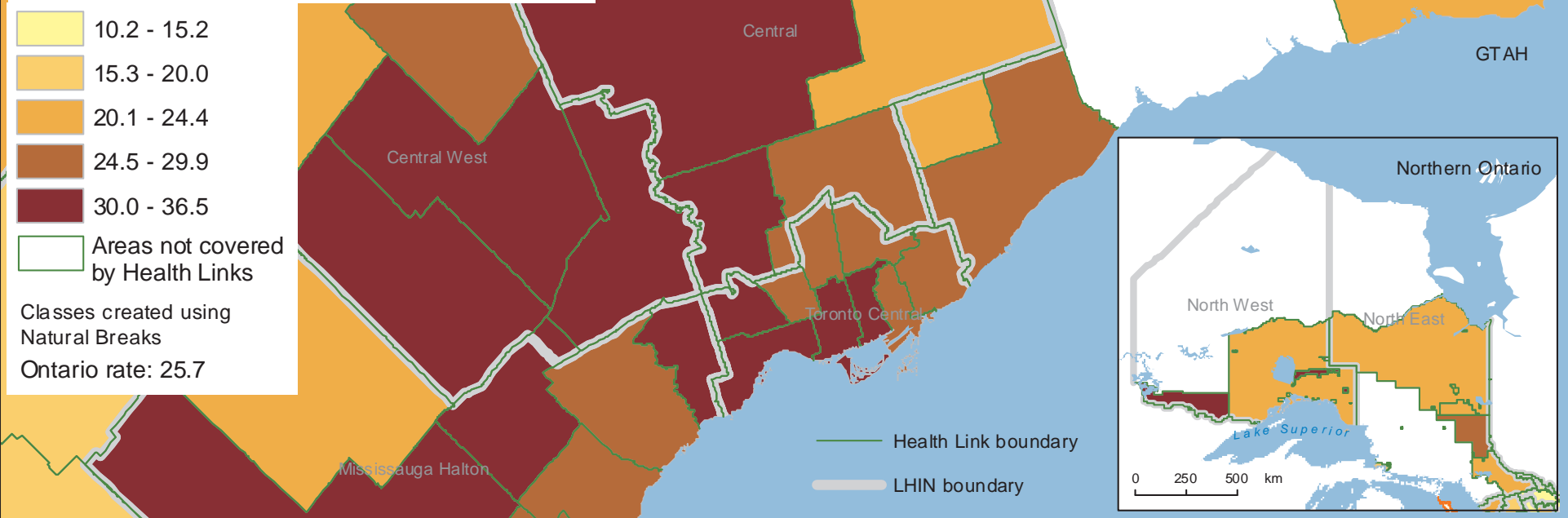


People 19+ with Low Continuity of Care As a Percentage of All People With 3+ Visits Within Two Years (March 31, 2013) by Health Link

- 10.2 - 15.2
- 15.3 - 20.0
- 20.1 - 24.4
- 24.5 - 29.9
- 30.0 - 36.5
- Areas not covered by Health Links

Classes created using Natural Breaks
 Ontario rate: 25.7



Map 5

Data Sources:
 Client Agency Provider
 Enrolment (CAPE), Institute
 for Clinical Evaluative Sciences

Copyright © 2016
 Ontario Community Health
 Profiles Partnership:
 Not for commercial use

