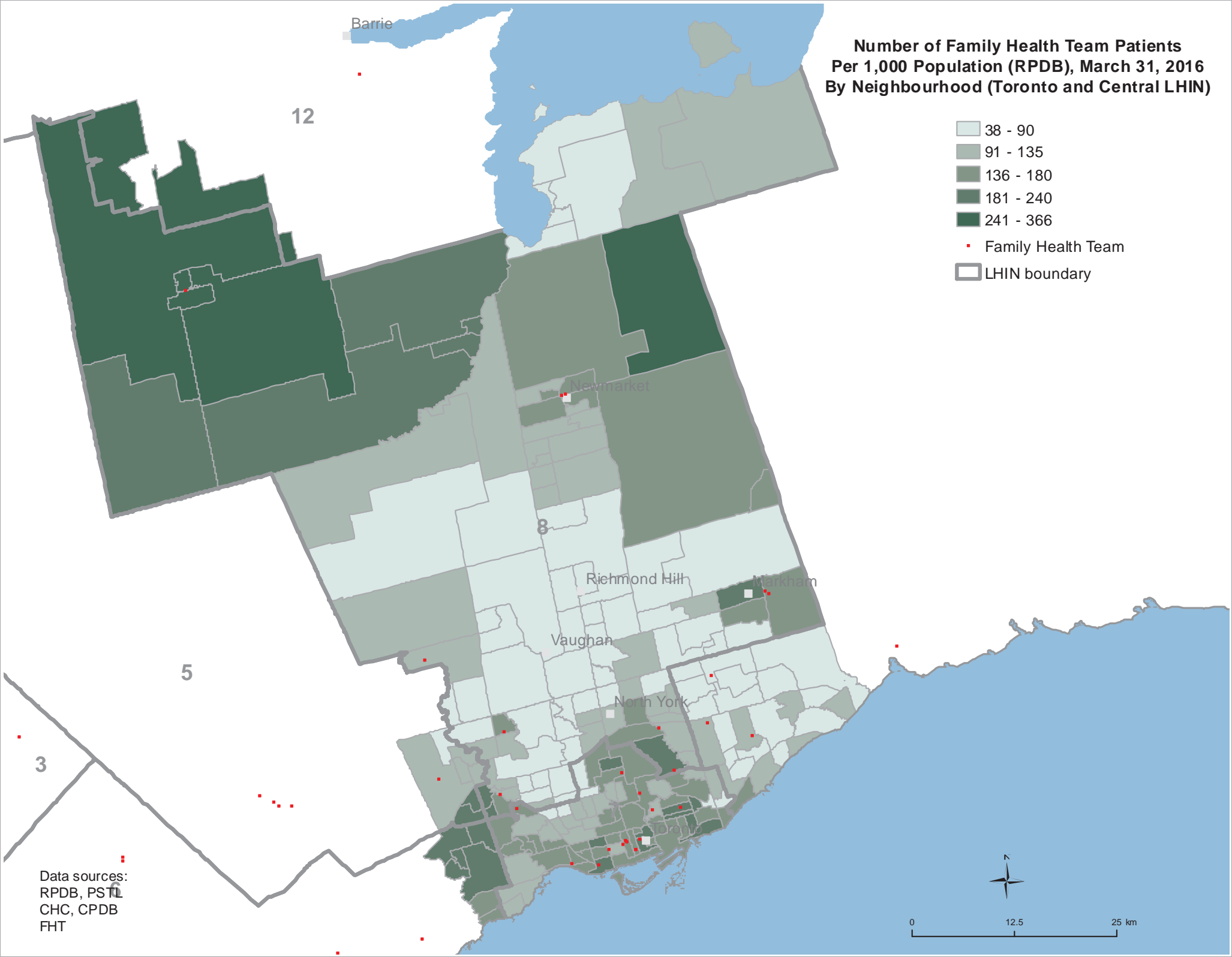


**Number of Family Health Team Patients
Per 1,000 Population (RPDB), March 31, 2016
By Neighbourhood (Toronto and Central LHIN)**

- 38 - 90
- 91 - 135
- 136 - 180
- 181 - 240
- 241 - 366
- Family Health Team
- LHIN boundary



Data sources:
RPDB, PSTI
CHC, CPDB
FHT

