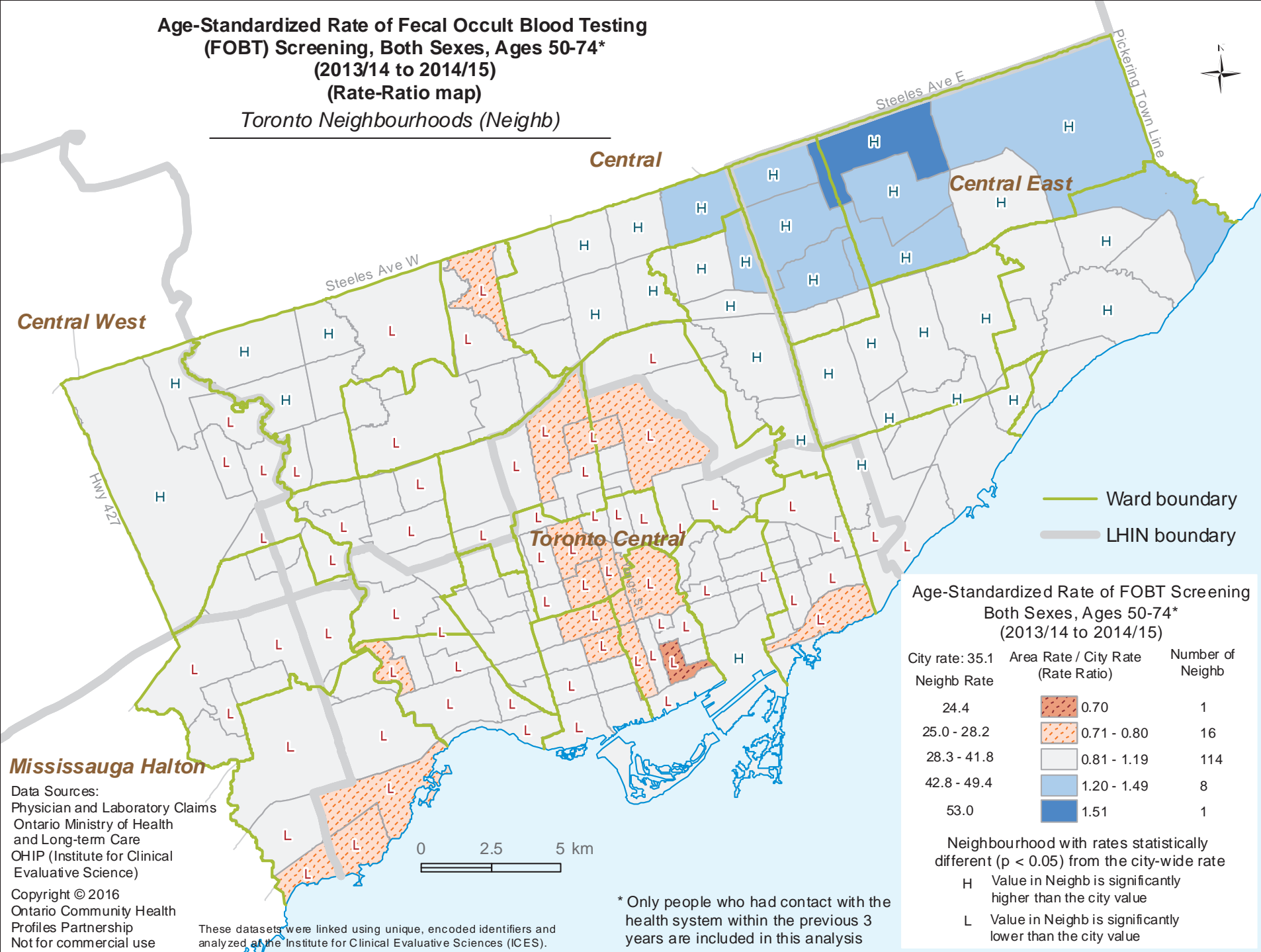


Age-Standardized Rate of Fecal Occult Blood Testing (FOBT) Screening, Both Sexes, Ages 50-74* (2013/14 to 2014/15)

(Rate-Ratio map)

Toronto Neighbourhoods (Neighb)



— Ward boundary
— LHIN boundary

Age-Standardized Rate of FOBT Screening Both Sexes, Ages 50-74* (2013/14 to 2014/15)

City rate: 35.1	Area Rate / City Rate (Rate Ratio)	Number of Neighb
Neighb Rate		
24.4	0.70	1
25.0 - 28.2	0.71 - 0.80	16
28.3 - 41.8	0.81 - 1.19	114
42.8 - 49.4	1.20 - 1.49	8
53.0	1.51	1

Neighbourhood with rates statistically different ($p < 0.05$) from the city-wide rate

H Value in Neighb is significantly higher than the city value

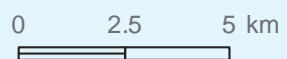
L Value in Neighb is significantly lower than the city value

Mississauga Halton

Data Sources:
Physician and Laboratory Claims
Ontario Ministry of Health and Long-term Care
OHIP (Institute for Clinical Evaluative Science)

Copyright © 2016
Ontario Community Health Profiles Partnership
Not for commercial use

These datasets were linked using unique, encoded identifiers and analyzed at the Institute for Clinical Evaluative Sciences (ICES).



* Only people who had contact with the health system within the previous 3 years are included in this analysis