

All attached patients attributed to North York Toronto Health Partners OHT (Regional View)



1 dot represents 10 patients

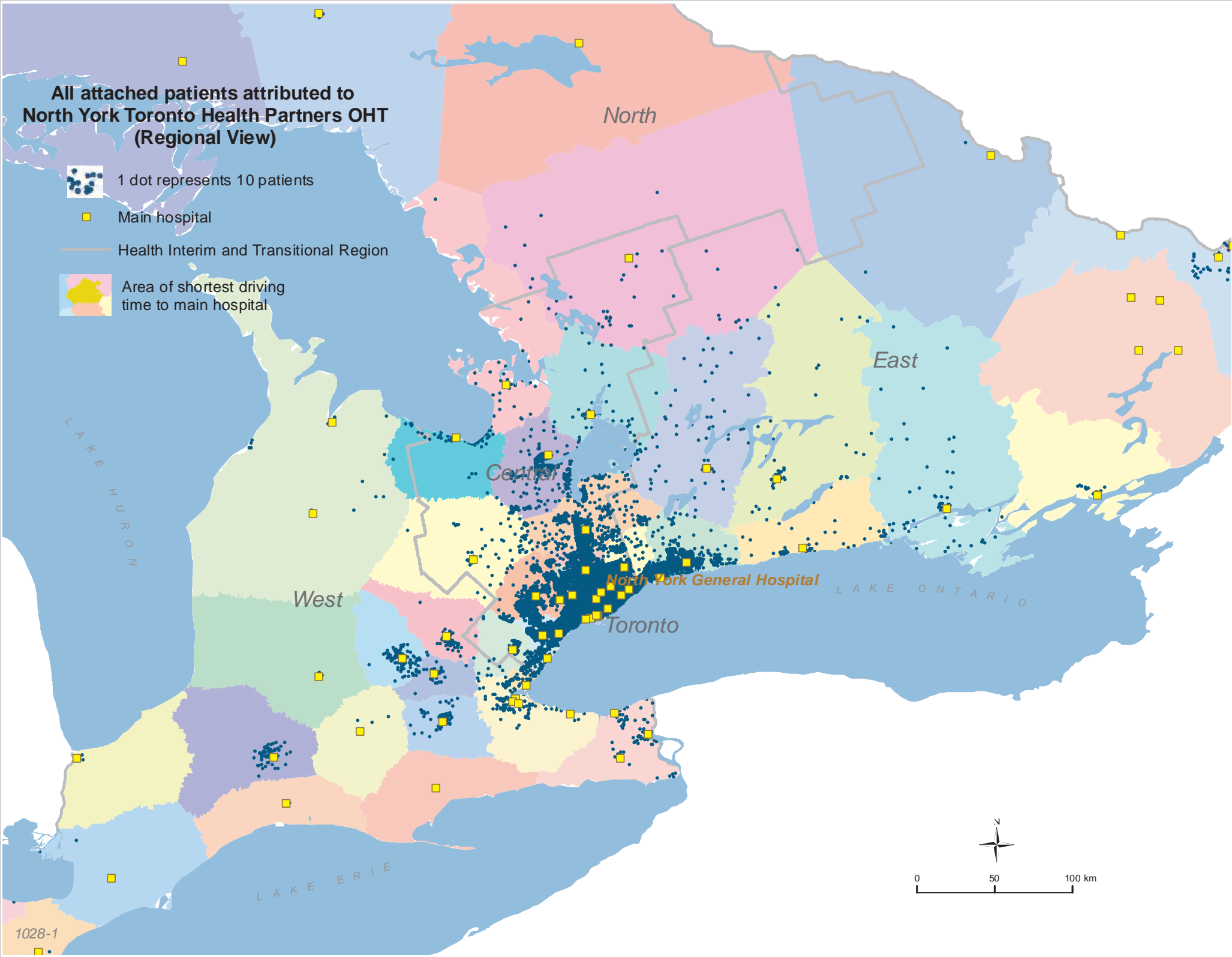


Main hospital

Health Interim and Transitional Region



Area of shortest driving time to main hospital



All attached patients attributed to North York Toronto Health Partners OHT (Local View)



1 dot represents 10 patients



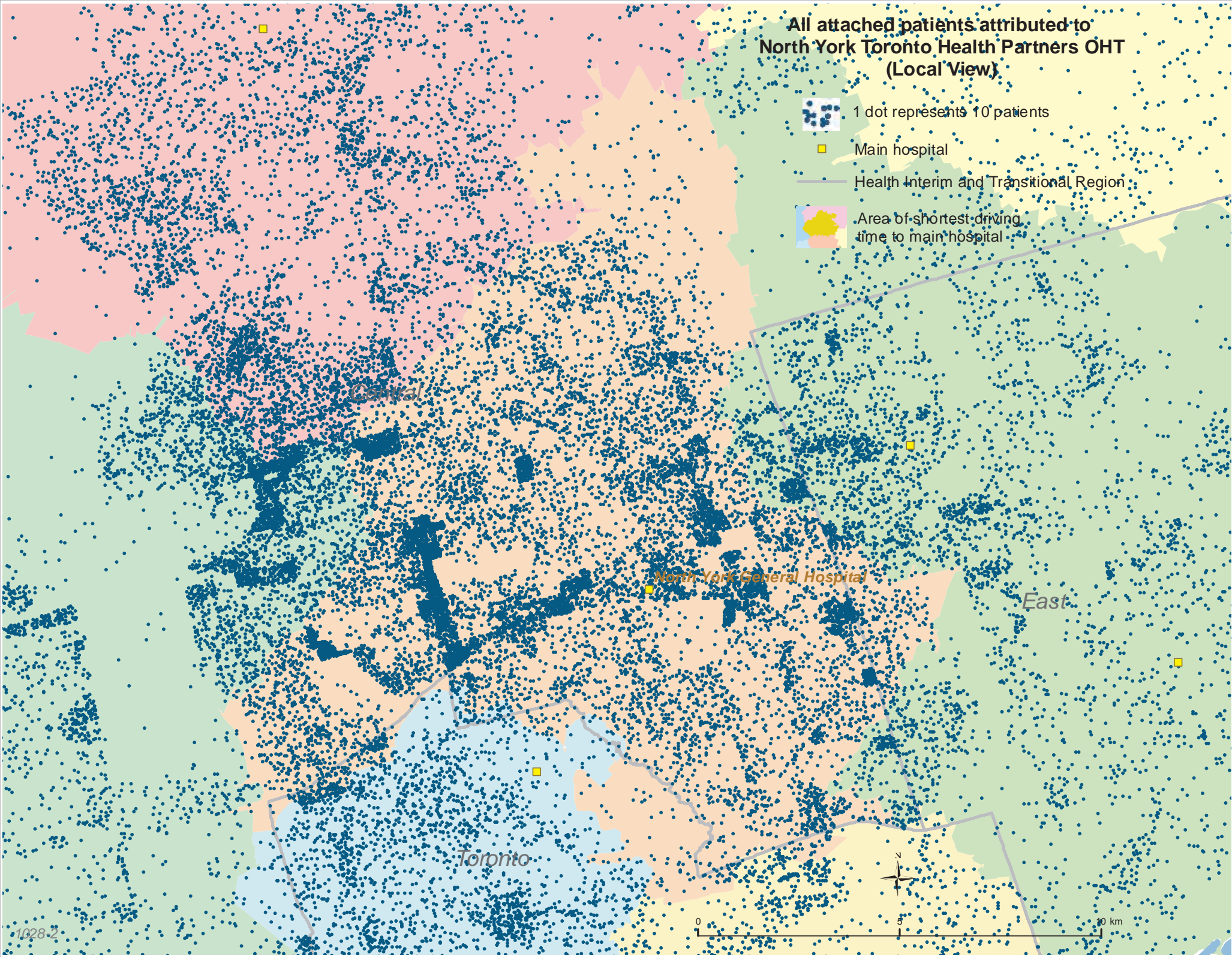
Main hospital



Health Interim and Transitional Region



Area of shortest driving time to main hospital



Central

North York General Hospital

East

Toronto

Uncertainly attached patients attributed to North York Toronto Health Partners OHT (Regional View)



1 dot represents 10 patients



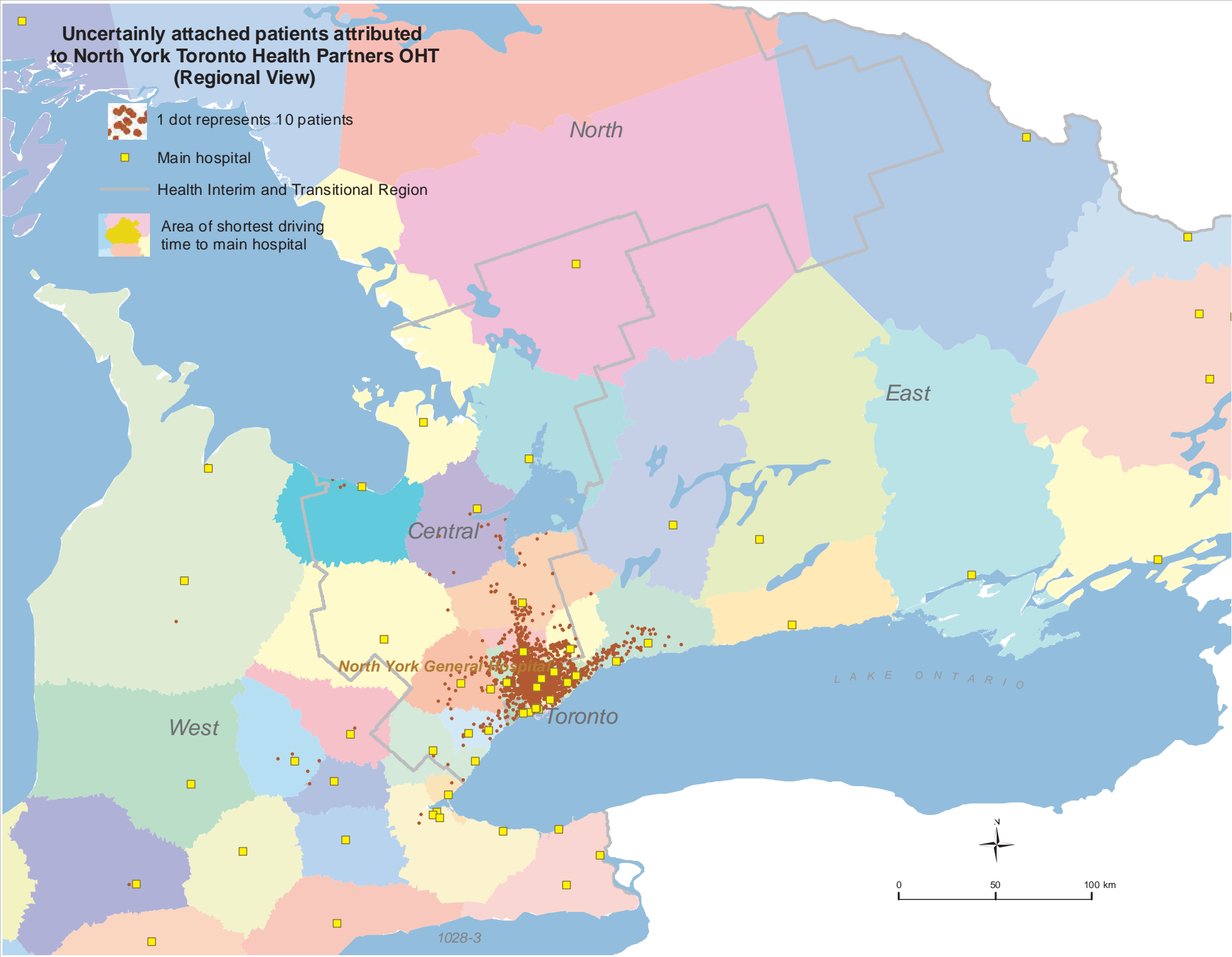
Main hospital



Health Interim and Transitional Region



Area of shortest driving time to main hospital



North York General Hospital

Toronto

LAKE ONTARIO

Uncertainly attached patients attributed to North York Toronto Health Partners OHT (Local View)



1 dot represents 10 patients

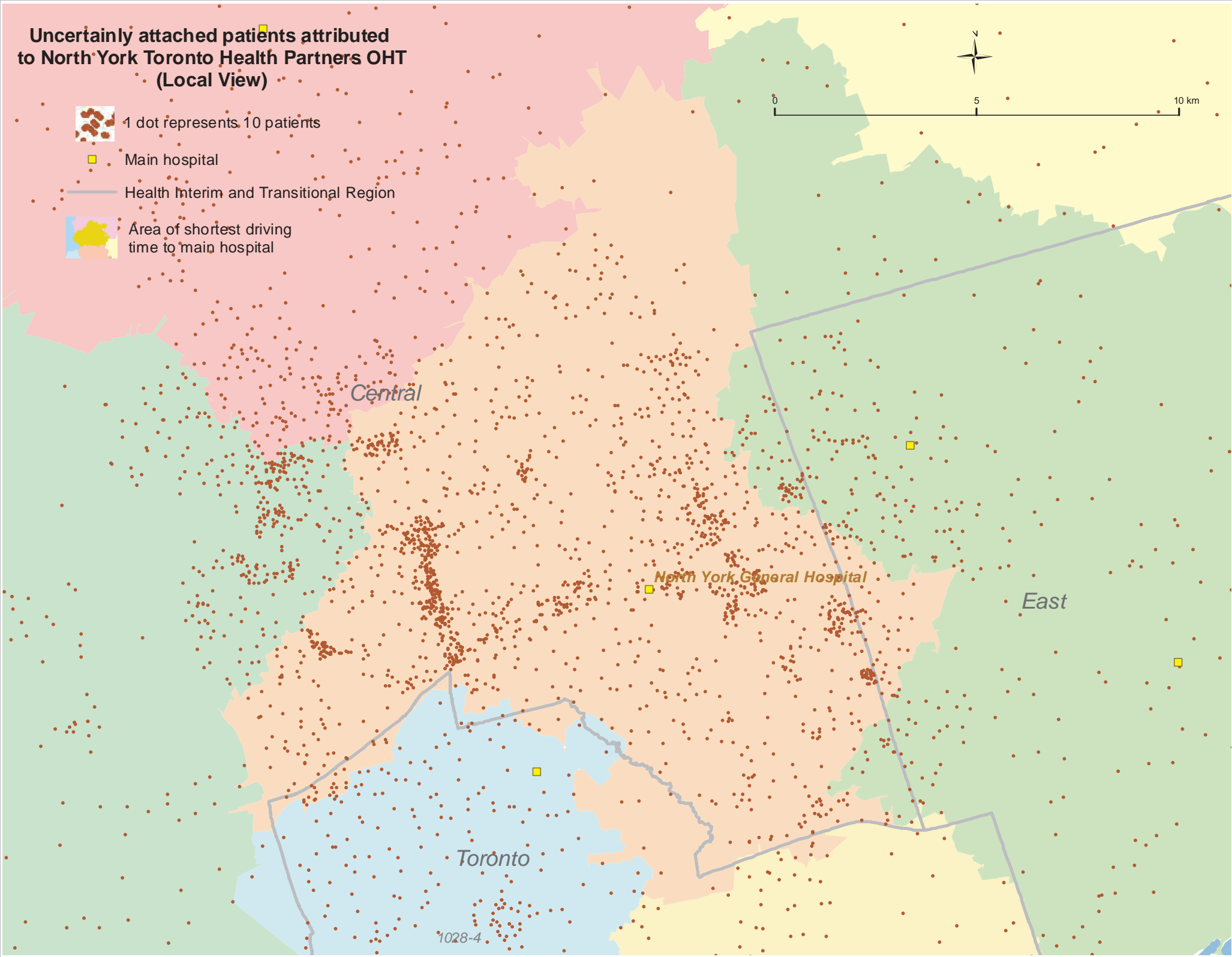
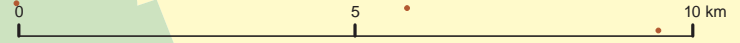


Main hospital





Health Interim and Transitional Region

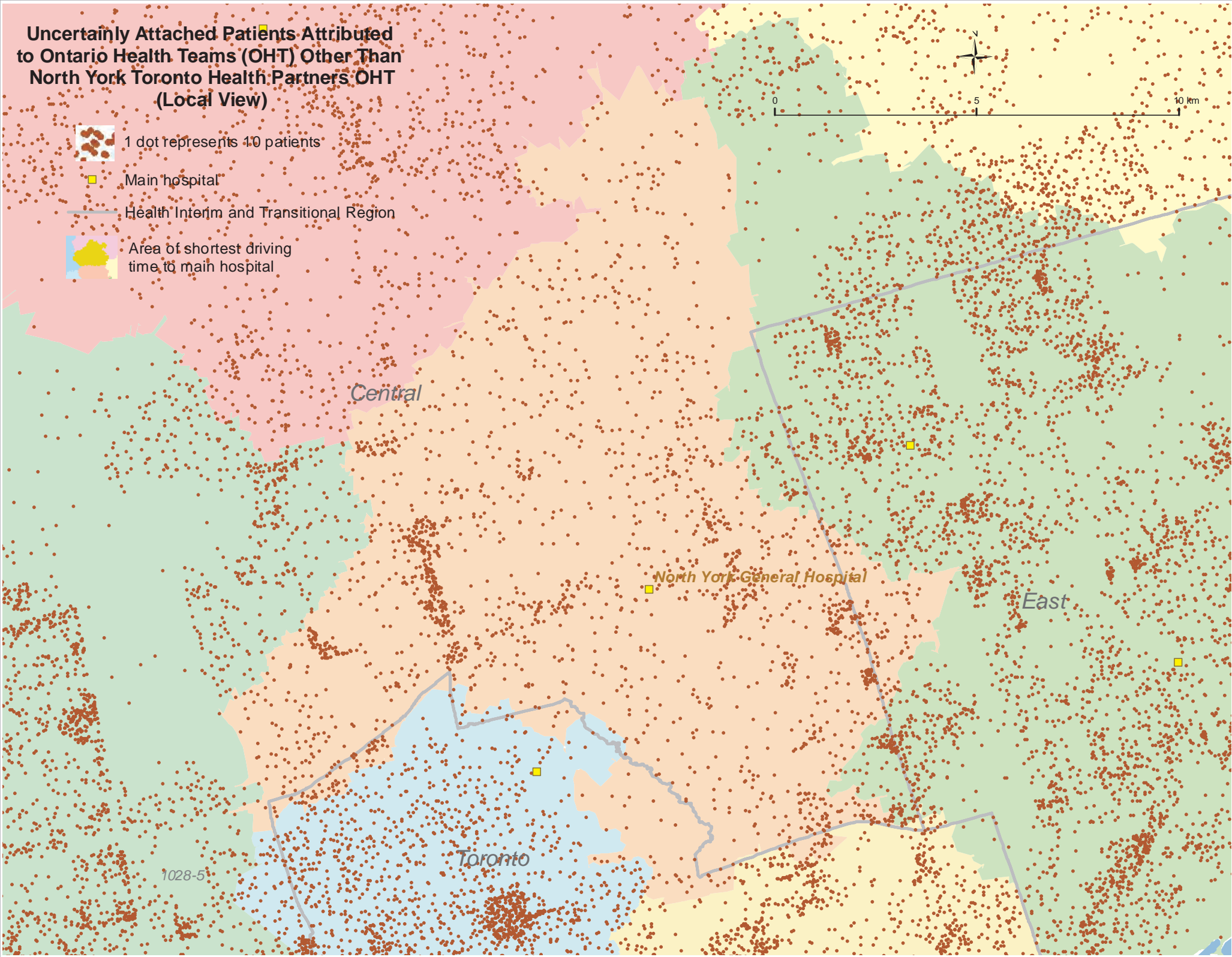
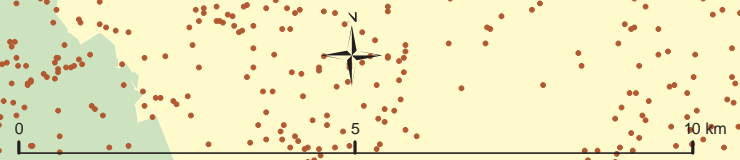


Area of shortest driving time to main hospital



Uncertainly Attached Patients Attributed to Ontario Health Teams (OHT) Other Than North York Toronto Health Partners OHT (Local View)

-  1 dot represents 10 patients
-  Main hospital
-  Health Interim and Transitional Region
-  Area of shortest driving time to main hospital



1028

North York Toronto Health Partners OHT

All attributed patients	503291
Attributed patients attached to primary care	459450
Attributed patients uncertainly attached to primary care	43841