



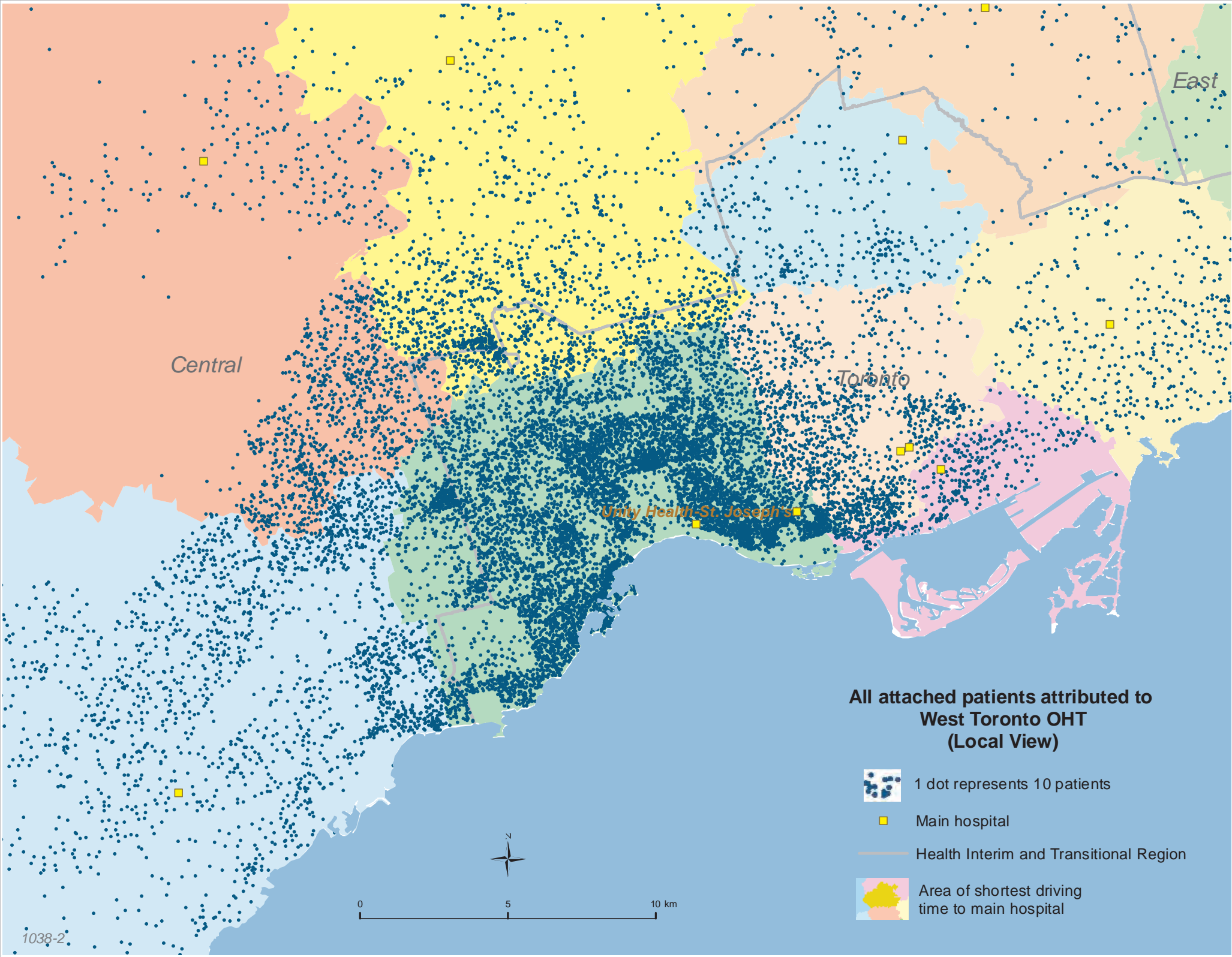


All attached patients attributed to West Toronto OHT (Regional View)

-  1 dot represents 10 patients
-  Main hospital
-  Health Interim and Transitional Region
-  Area of shortest driving time to main hospital







Central

Toronto

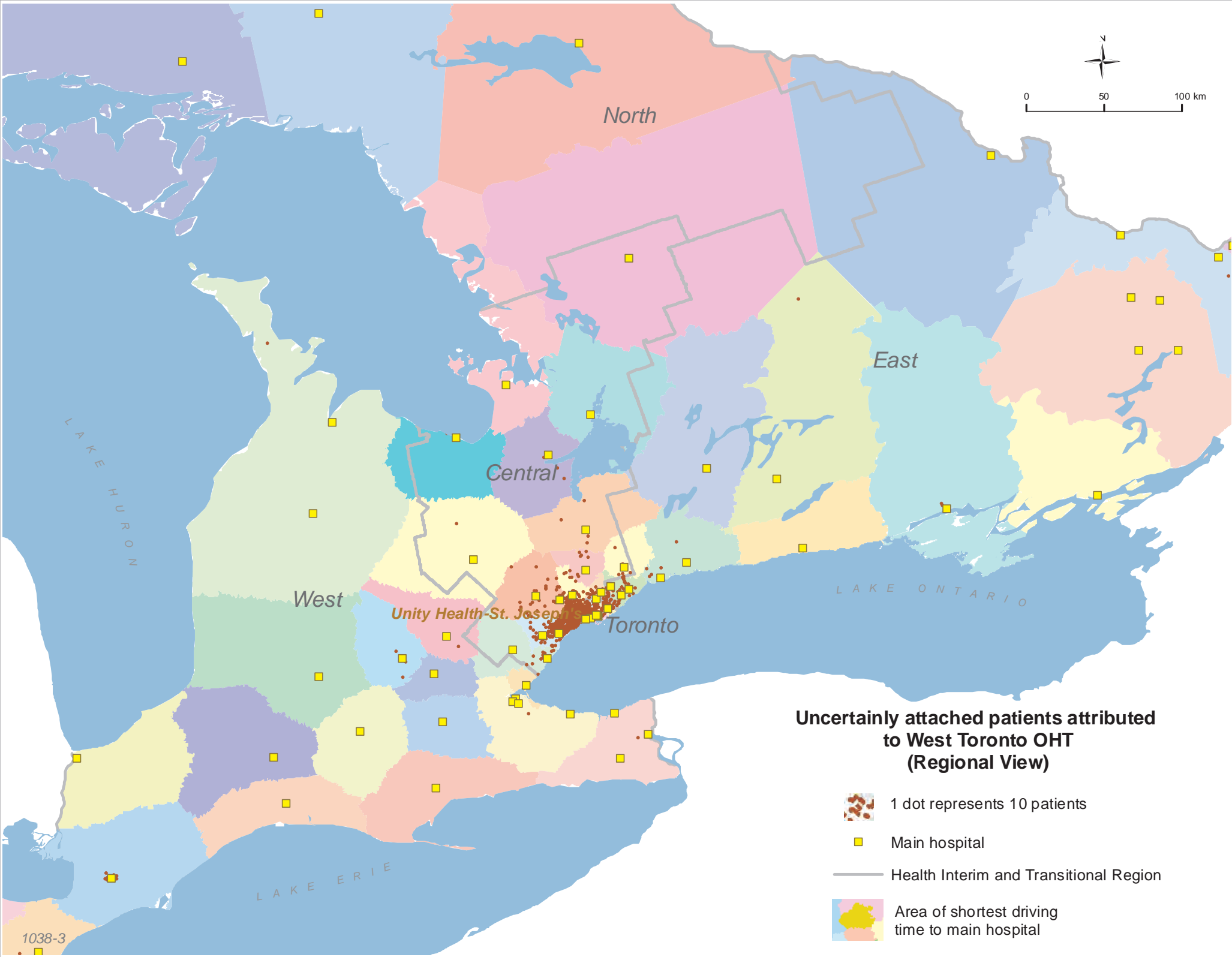
East

Unity Health - St. Joseph's





All attached patients attributed to West Toronto OHT (Local View)

-  1 dot represents 10 patients
-  Main hospital
-  Health Interim and Transitional Region
-  Area of shortest driving time to main hospital

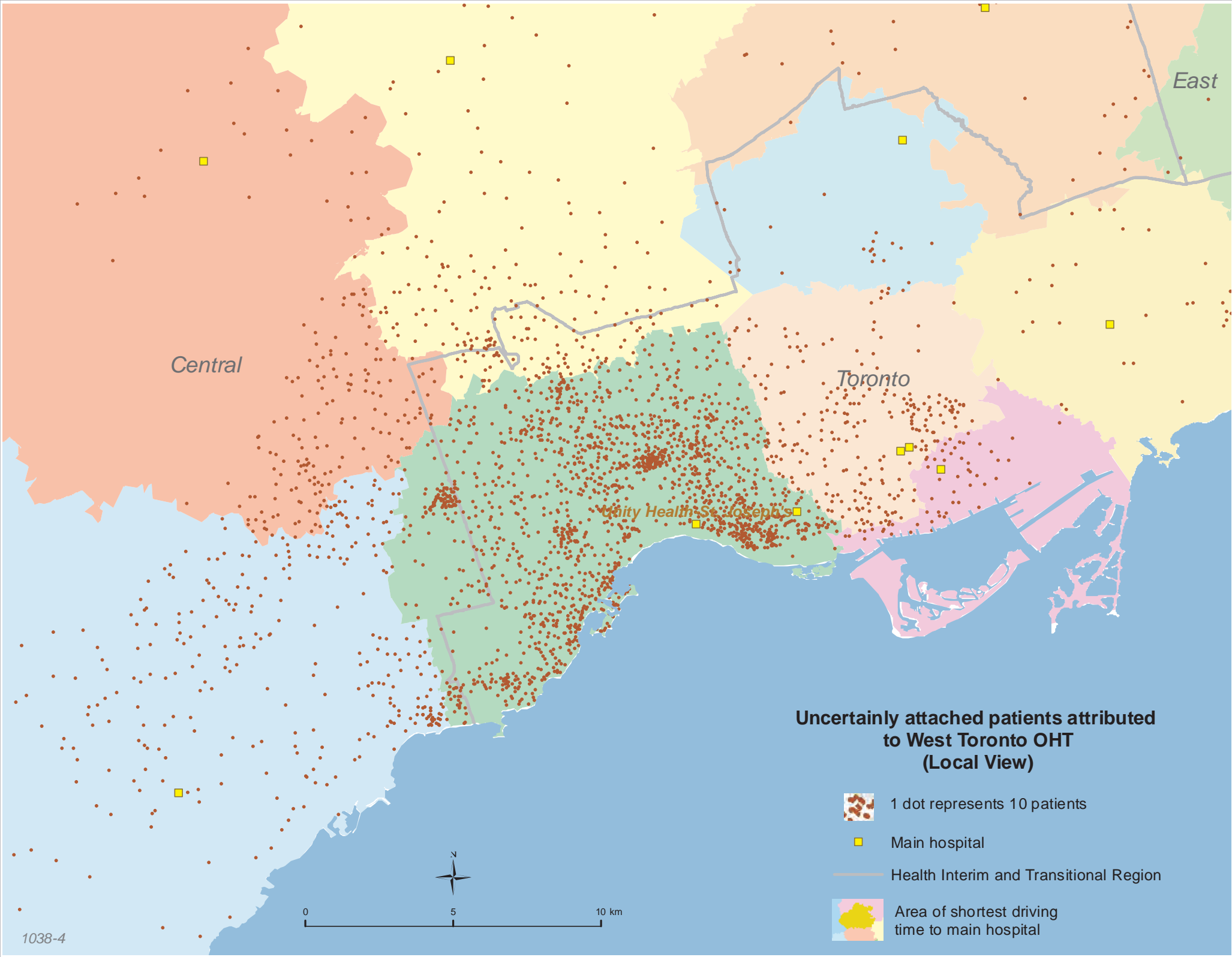
0 5 10 km



Uncertainly attached patients attributed to West Toronto OHT (Regional View)

-  1 dot represents 10 patients
-  Main hospital
-  Health Interim and Transitional Region
-  Area of shortest driving time to main hospital

1038-3



Central

East

Toronto

Unity Health St. Joseph's

Uncertainly attached patients attributed to West Toronto OHT (Local View)



1 dot represents 10 patients



Main hospital



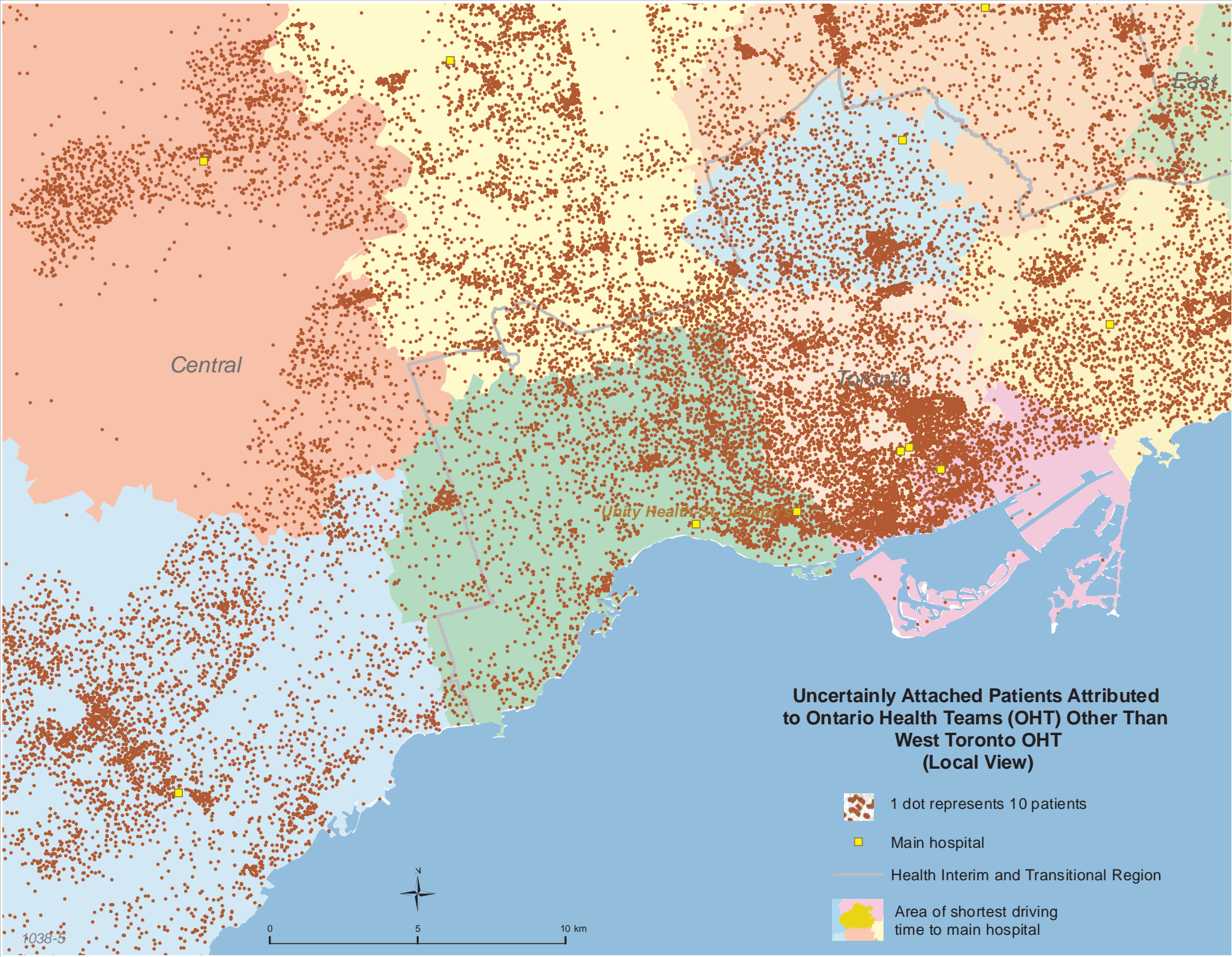
Health Interim and Transitional Region



Area of shortest driving time to main hospital



0 5 10 km



1038

West Toronto OHT

All attributed patients	232087
Attributed patients attached to primary care	195328
Attributed patients uncertainly attached to primary care	36759