



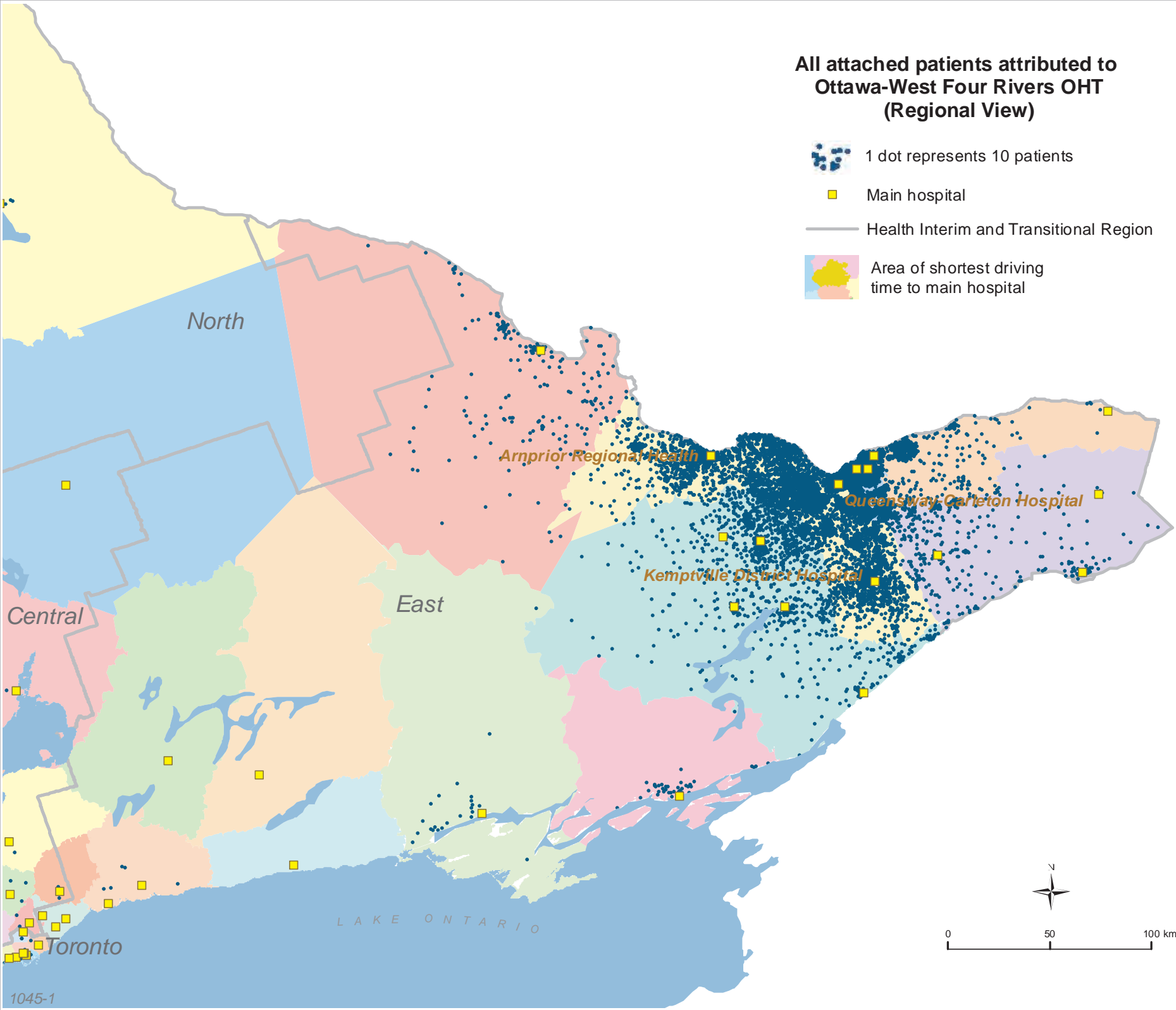






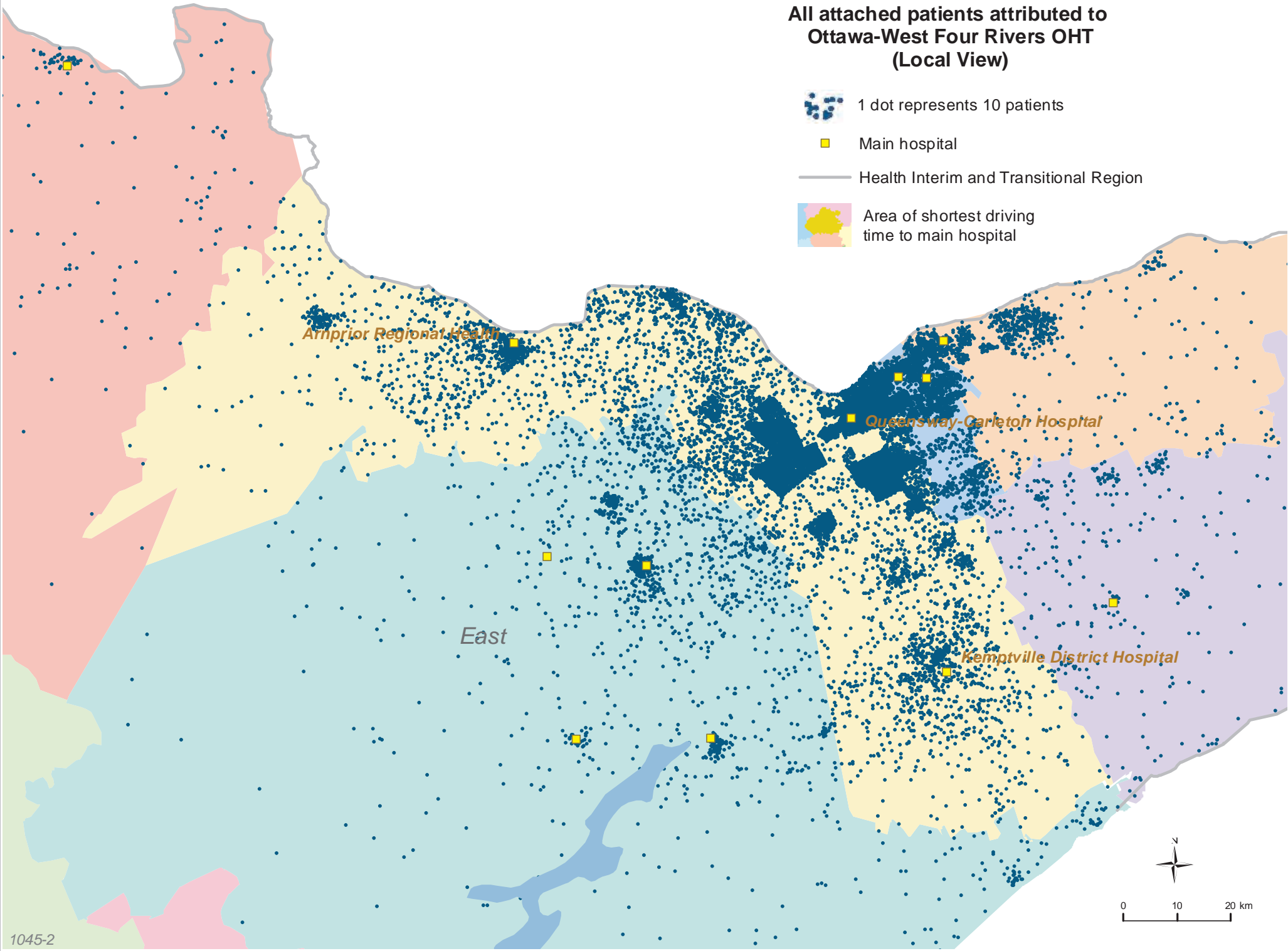
All attached patients attributed to Ottawa-West Four Rivers OHT (Regional View)

-  1 dot represents 10 patients
-  Main hospital
-  Health Interim and Transitional Region
-  Area of shortest driving time to main hospital



All attached patients attributed to Ottawa-West Four Rivers OHT (Local View)

-  1 dot represents 10 patients
-  Main hospital
-  Health Interim and Transitional Region
-  Area of shortest driving time to main hospital



Uncertainly attached patients attributed to Ottawa-West Four Rivers OHT (Regional View)



1 dot represents 10 patients



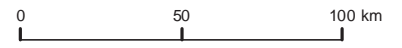
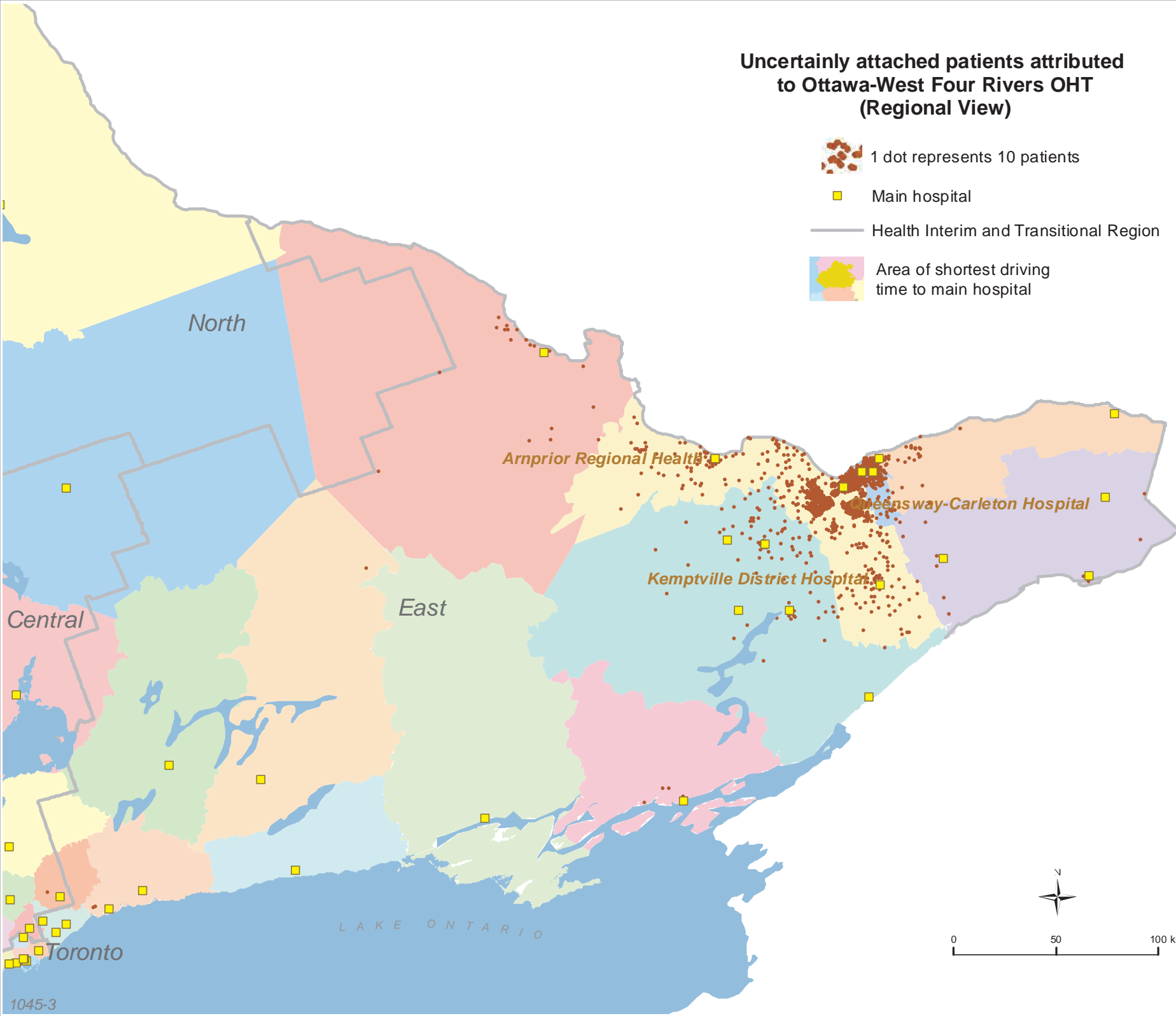
Main hospital



Health Interim and Transitional Region



Area of shortest driving time to main hospital



Uncertainly attached patients attributed to Ottawa-West Four Rivers OHT (Local View)



1 dot represents 10 patients



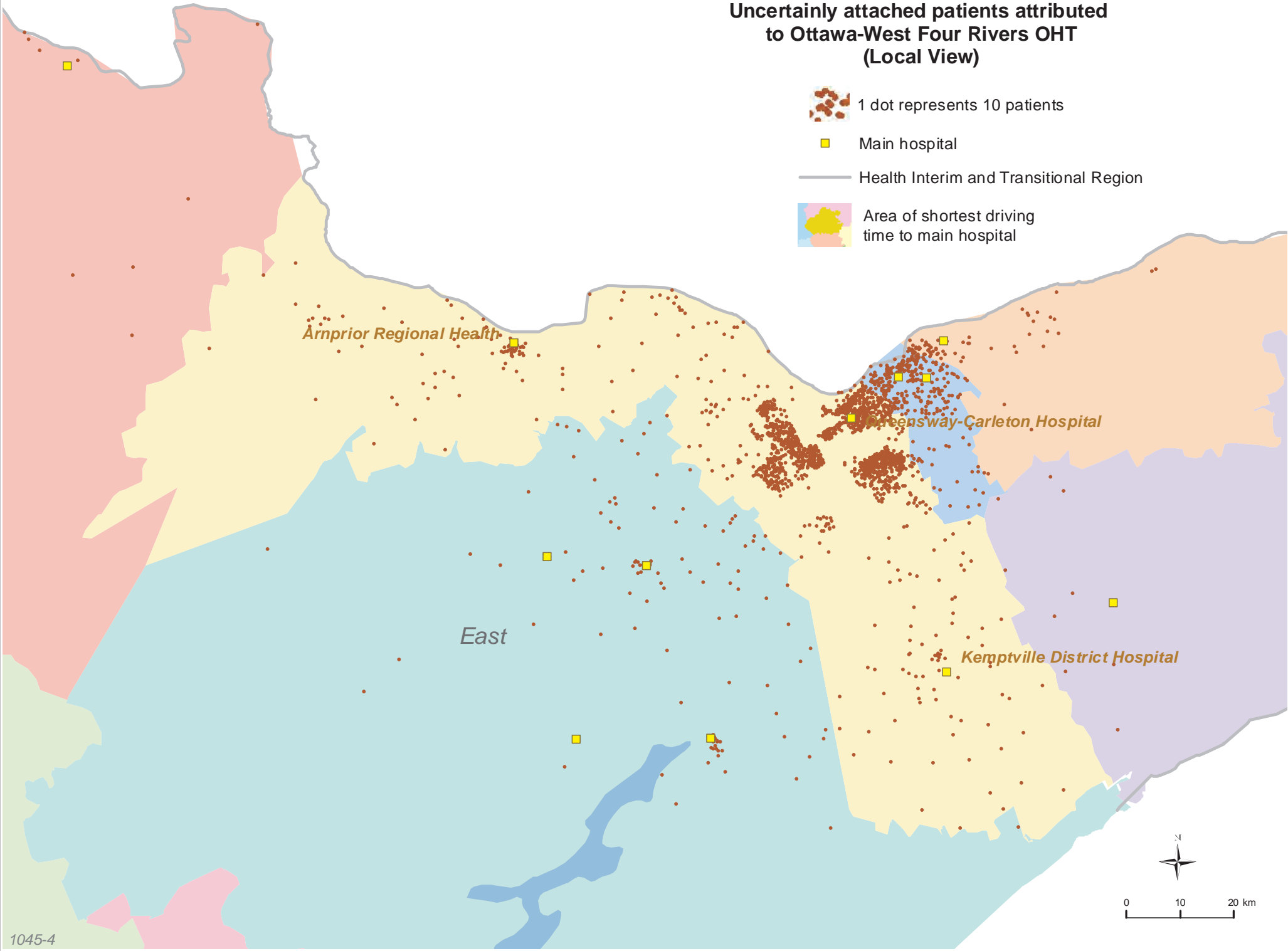
Main hospital



Health Interim and Transitional Region



Area of shortest driving time to main hospital



Arnprior Regional Health

Greenway-Carleton Hospital

East

Kemptville District Hospital



0 10 20 km

Uncertainly Attached Patients Attributed to Ontario Health Teams (OHT) Other Than Ottawa-West Four Rivers OHT (Local View)



1 dot represents 10 patients



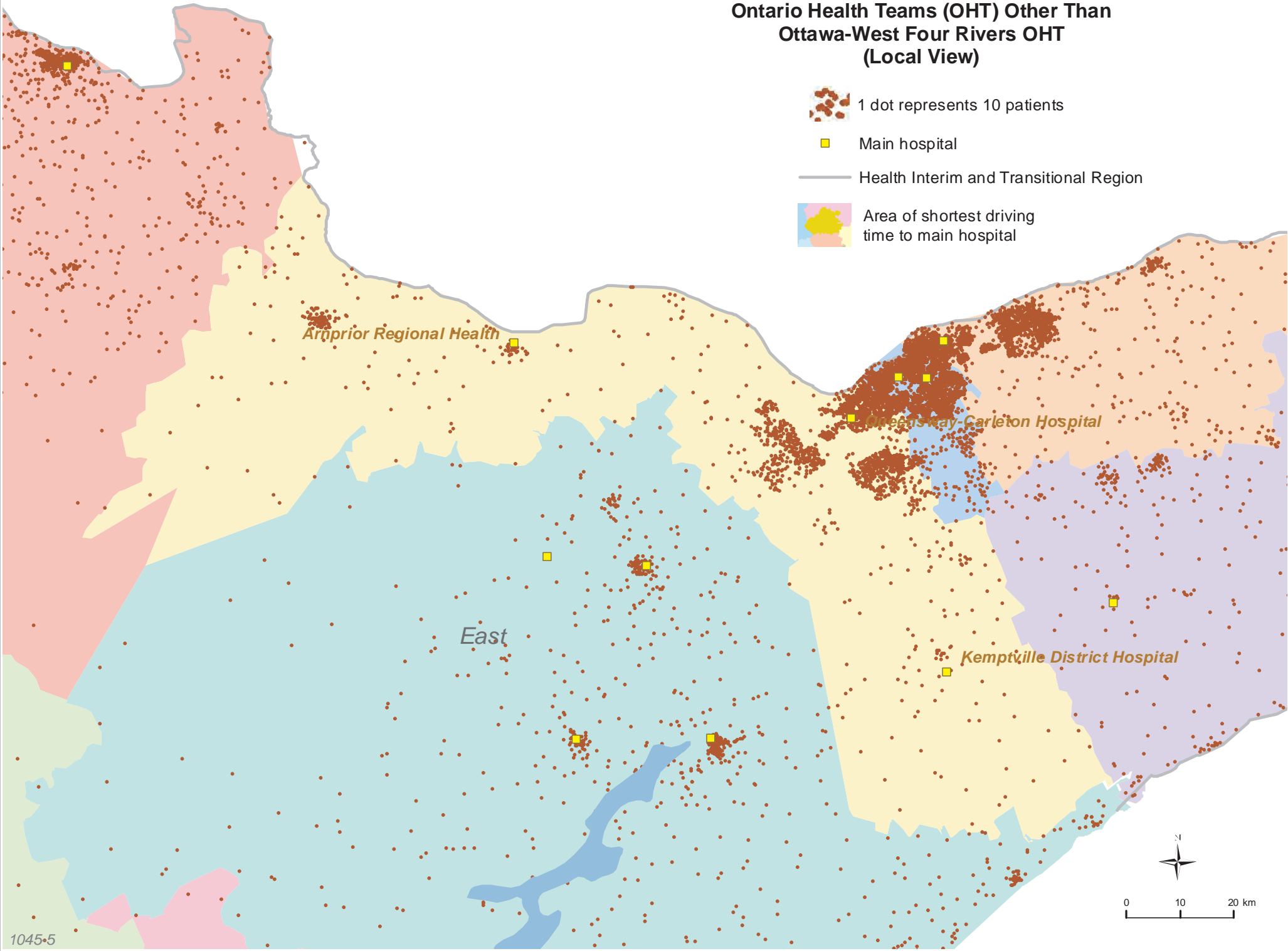
Main hospital



Health Interim and Transitional Region



Area of shortest driving time to main hospital

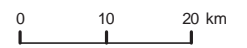


Arnprior Regional Health

Ottawa-Carleton Hospital

Kemptville District Hospital

East



1045

Ottawa-West Four Rivers OHT

All attributed patients	296768
Attributed patients attached to primary care	23806
Attributed patients uncertainly attached to primary care	320574