

# All attached patients attributed to Ottawa-West Four Rivers OHT (Regional View)



1 dot represents 10 patients



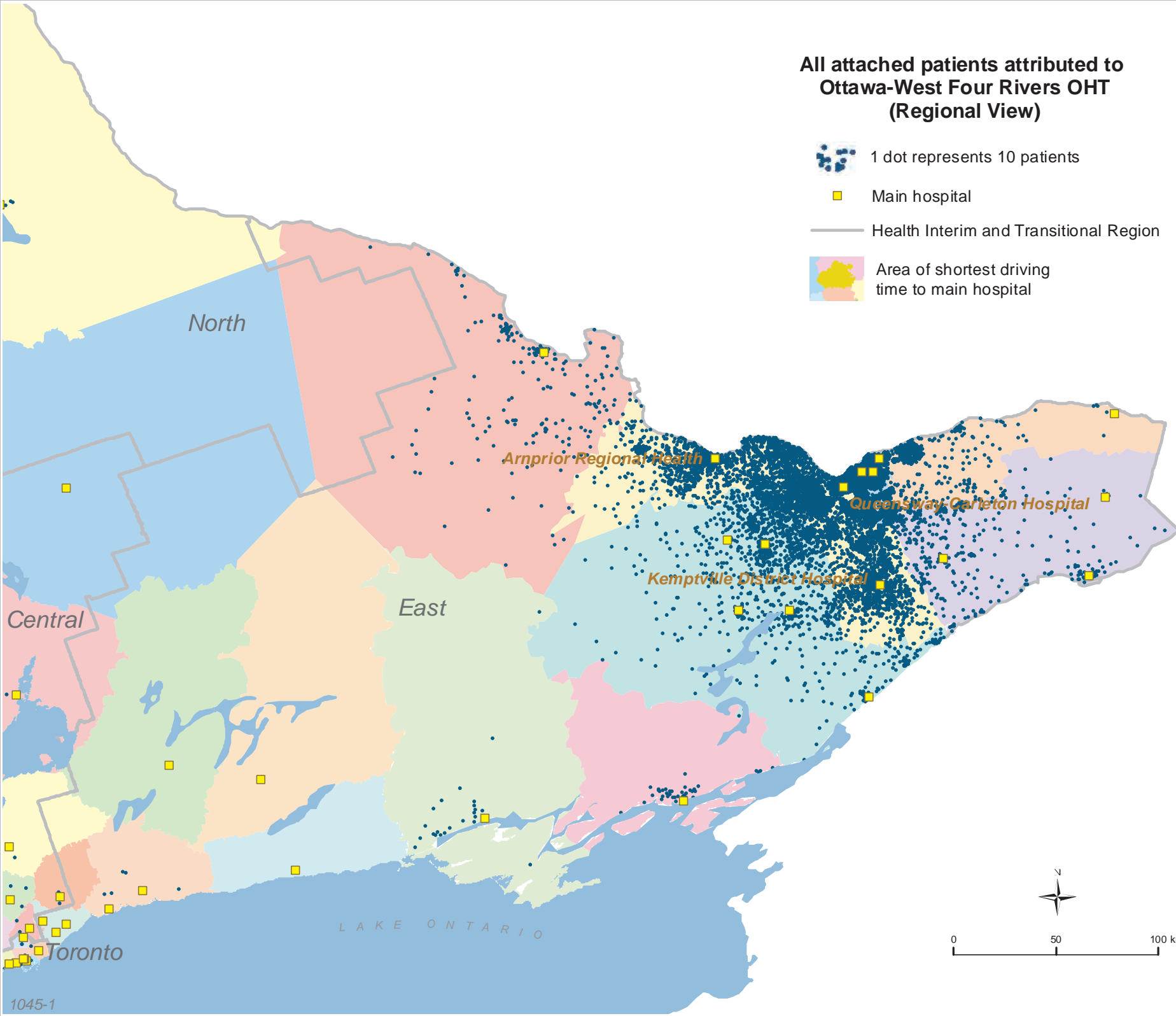
Main hospital







Health Interim and Transitional Region

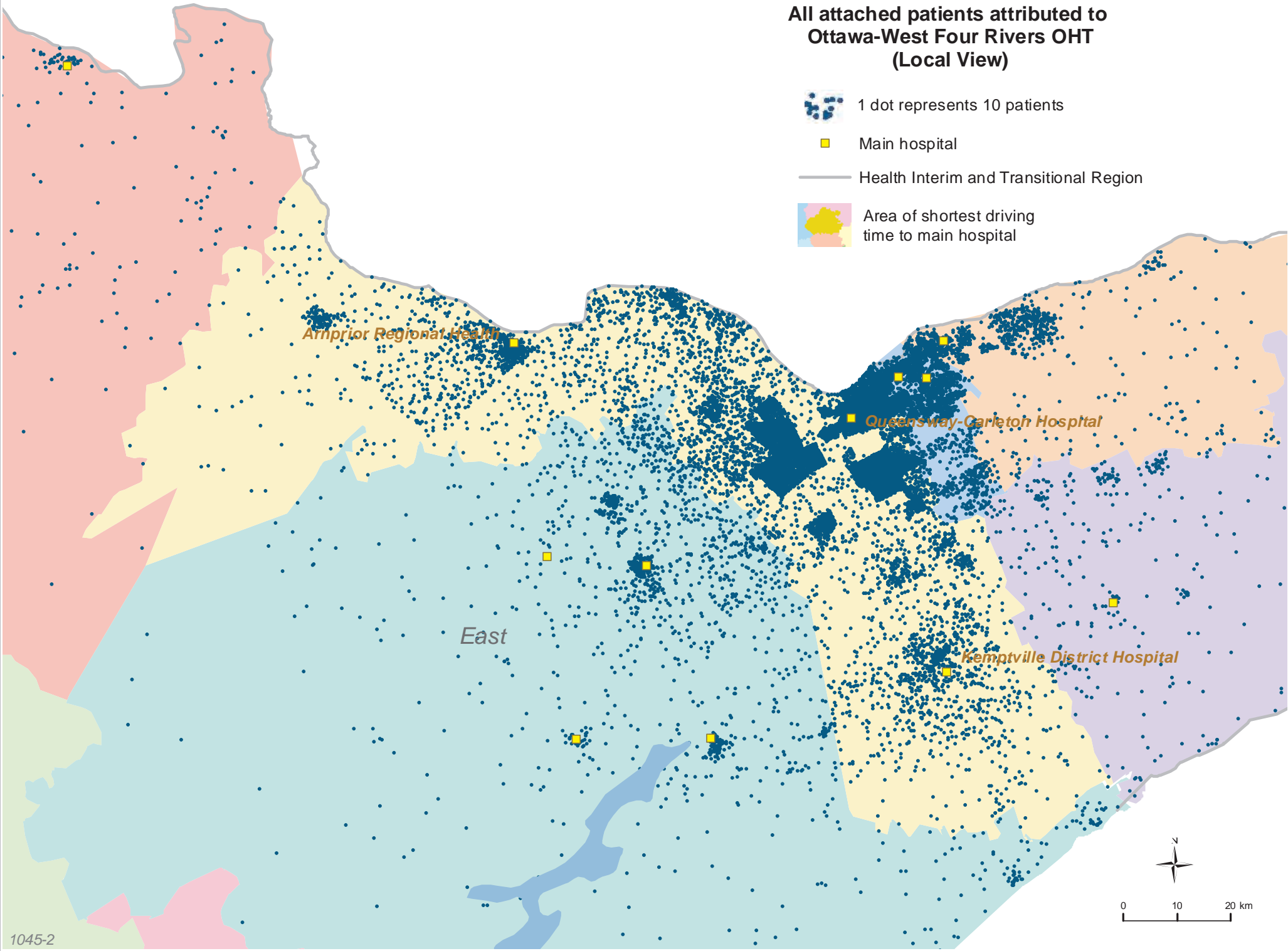


Area of shortest driving time to main hospital



# All attached patients attributed to Ottawa-West Four Rivers OHT (Local View)

-  1 dot represents 10 patients
-  Main hospital
-  Health Interim and Transitional Region
-  Area of shortest driving time to main hospital



# Uncertainly attached patients attributed to Ottawa-West Four Rivers OHT (Regional View)



1 dot represents 10 patients



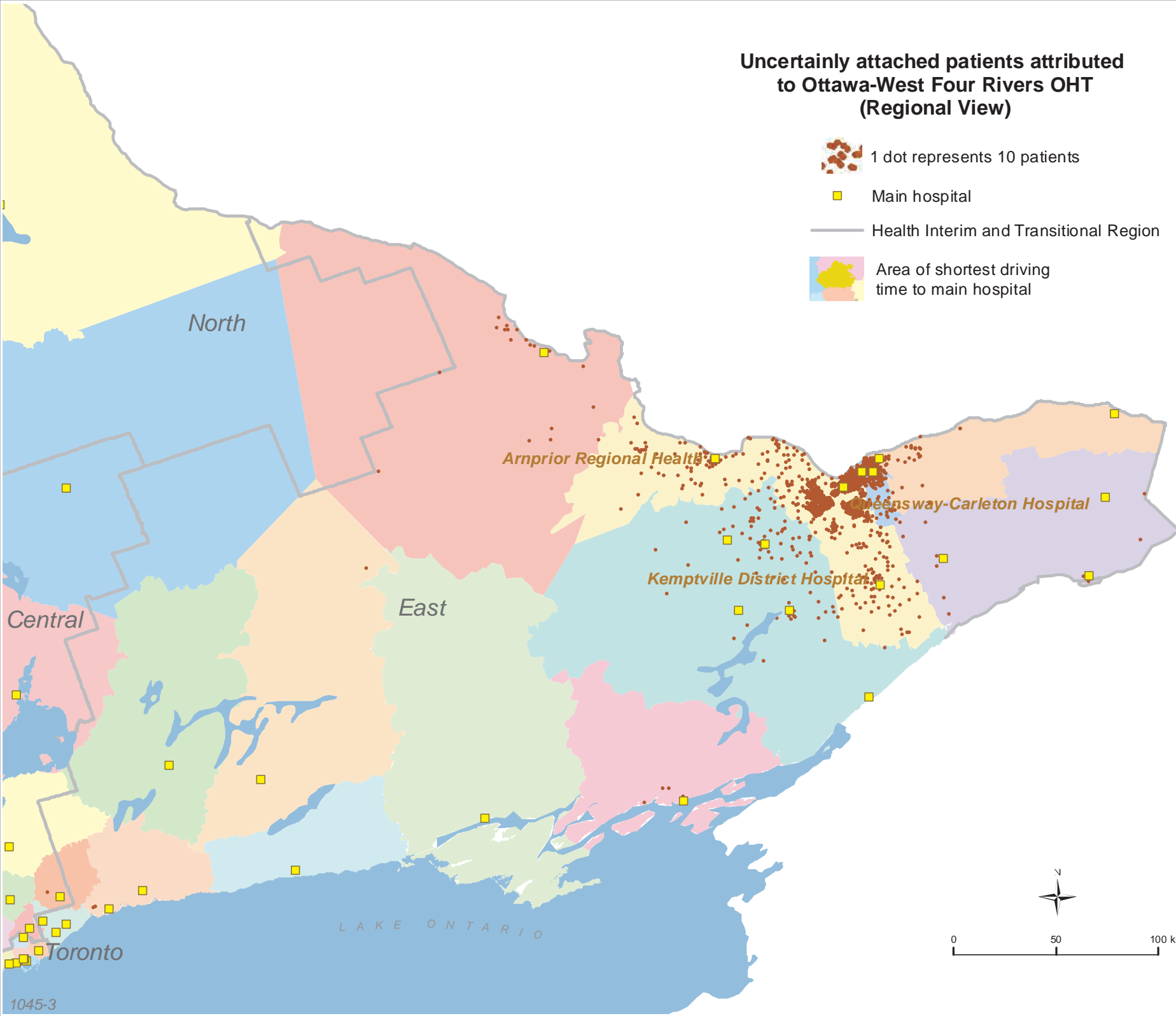
Main hospital



Health Interim and Transitional Region



Area of shortest driving time to main hospital



0 50 100 km

# Uncertainly attached patients attributed to Ottawa-West Four Rivers OHT (Local View)



1 dot represents 10 patients



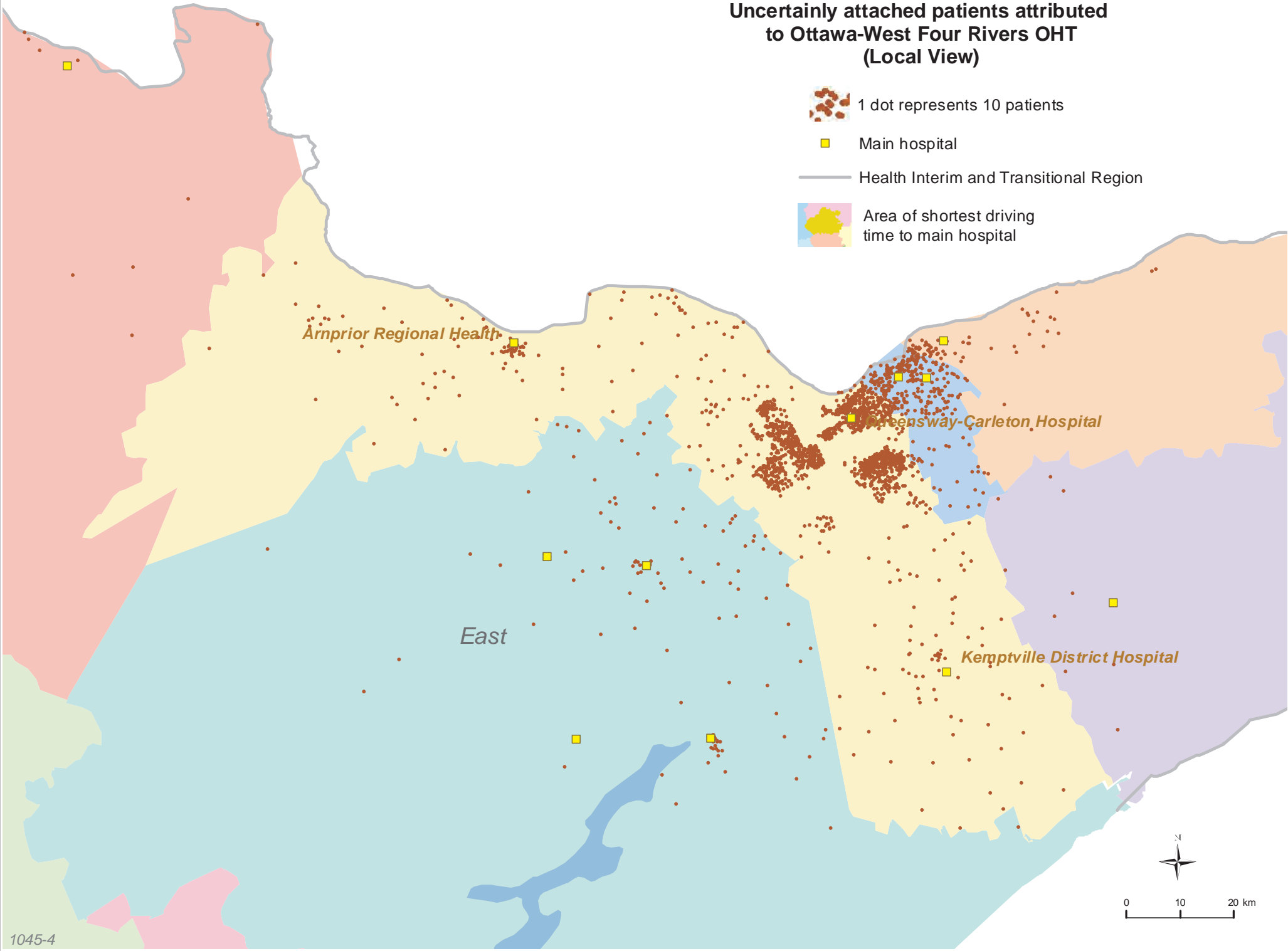
Main hospital



Health Interim and Transitional Region



Area of shortest driving time to main hospital



*Arnprior Regional Health*

*Greenway-Carleton Hospital*

*East*

*Kemptville District Hospital*



0 10 20 km

# Uncertainly Attached Patients Attributed to Ontario Health Teams (OHT) Other Than Ottawa-West Four Rivers OHT (Local View)



1 dot represents 10 patients



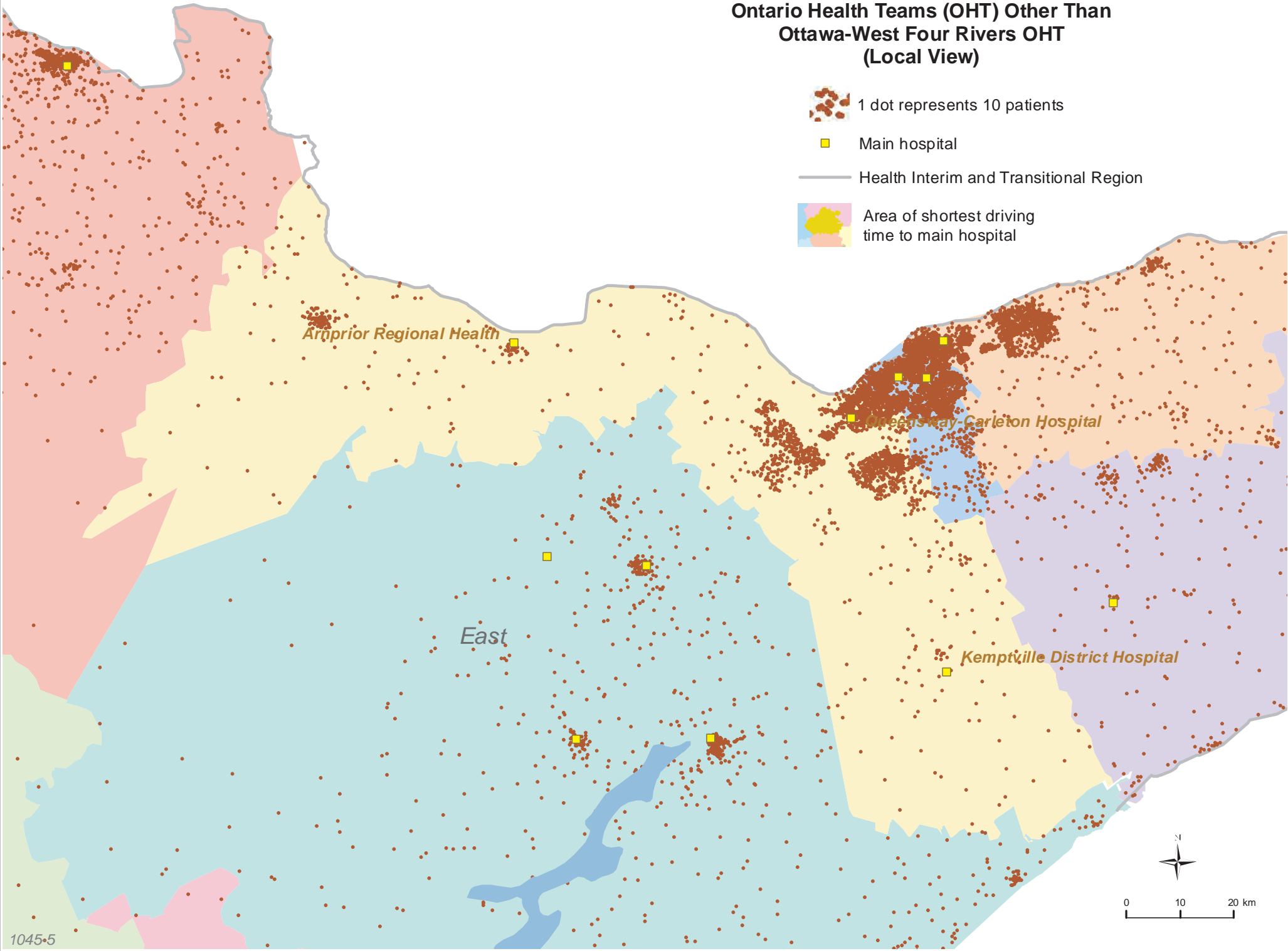
Main hospital



Health Interim and Transitional Region



Area of shortest driving time to main hospital



*Arnprior Regional Health*

*Nepean-Carleton Hospital*

*East*

*Kemptville District Hospital*



0 10 20 km

1045

Ottawa-West Four Rivers OHT

All attributed patients	320574
Attributed patients attached to primary care	296768
Attributed patients uncertainly attached to primary care	23806