

# All attached patients attributed to Hastings Prince Edward OHT (Regional View)



1 dot represents 10 patients



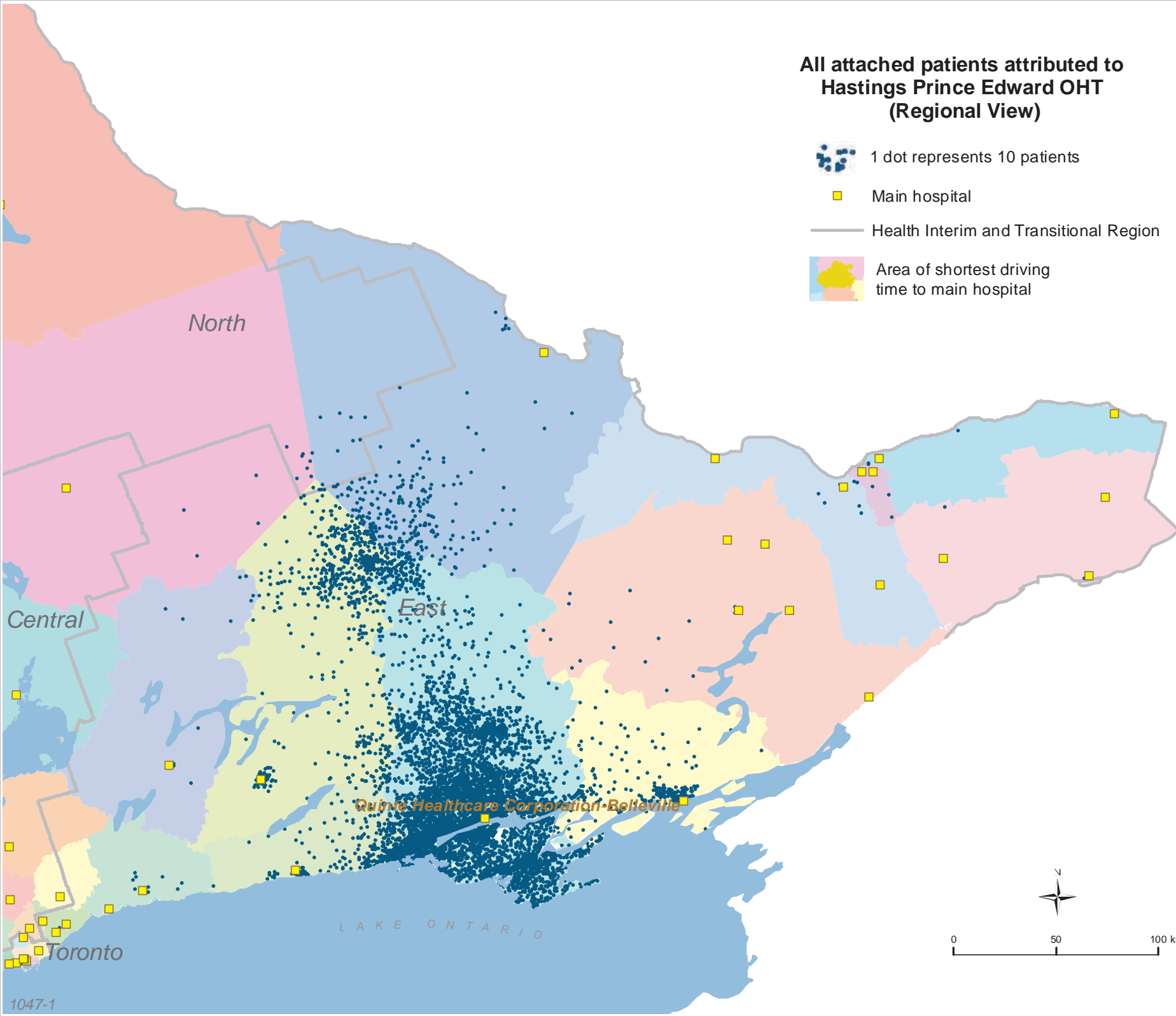
Main hospital



Health Interim and Transitional Region



Area of shortest driving time to main hospital



LAKE ONTARIO

Quinte Healthcare Corporation - Belleville





Toronto

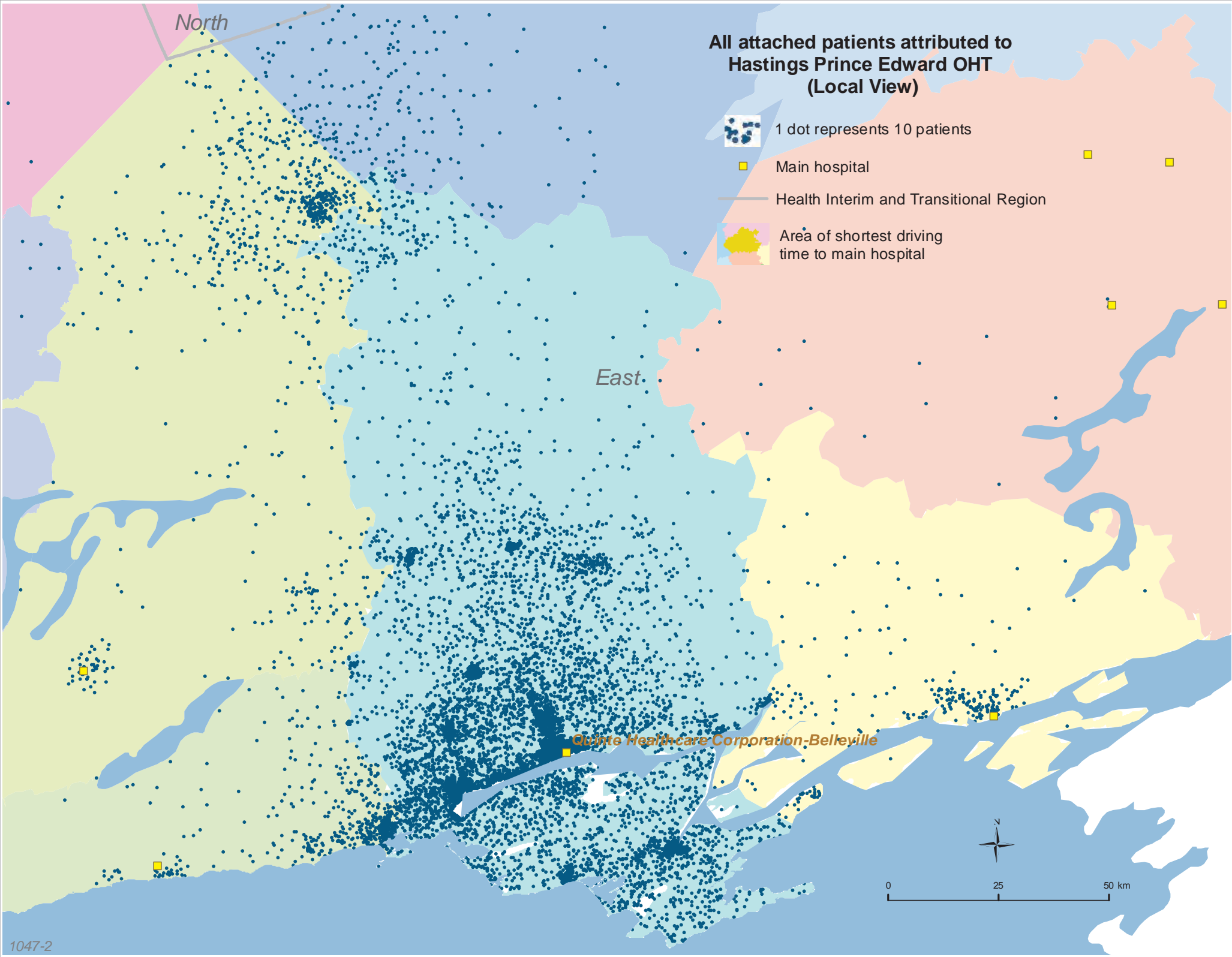
North

Central

East

# All attached patients attributed to Hastings Prince Edward OHT (Local View)

-  1 dot represents 10 patients
-  Main hospital
-  Health Interim and Transitional Region
-  Area of shortest driving time to main hospital



Quinte Healthcare Corporation-Belleville

# Uncertainly attached patients attributed to Hastings Prince Edward OHT (Regional View)



1 dot represents 10 patients



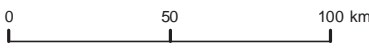
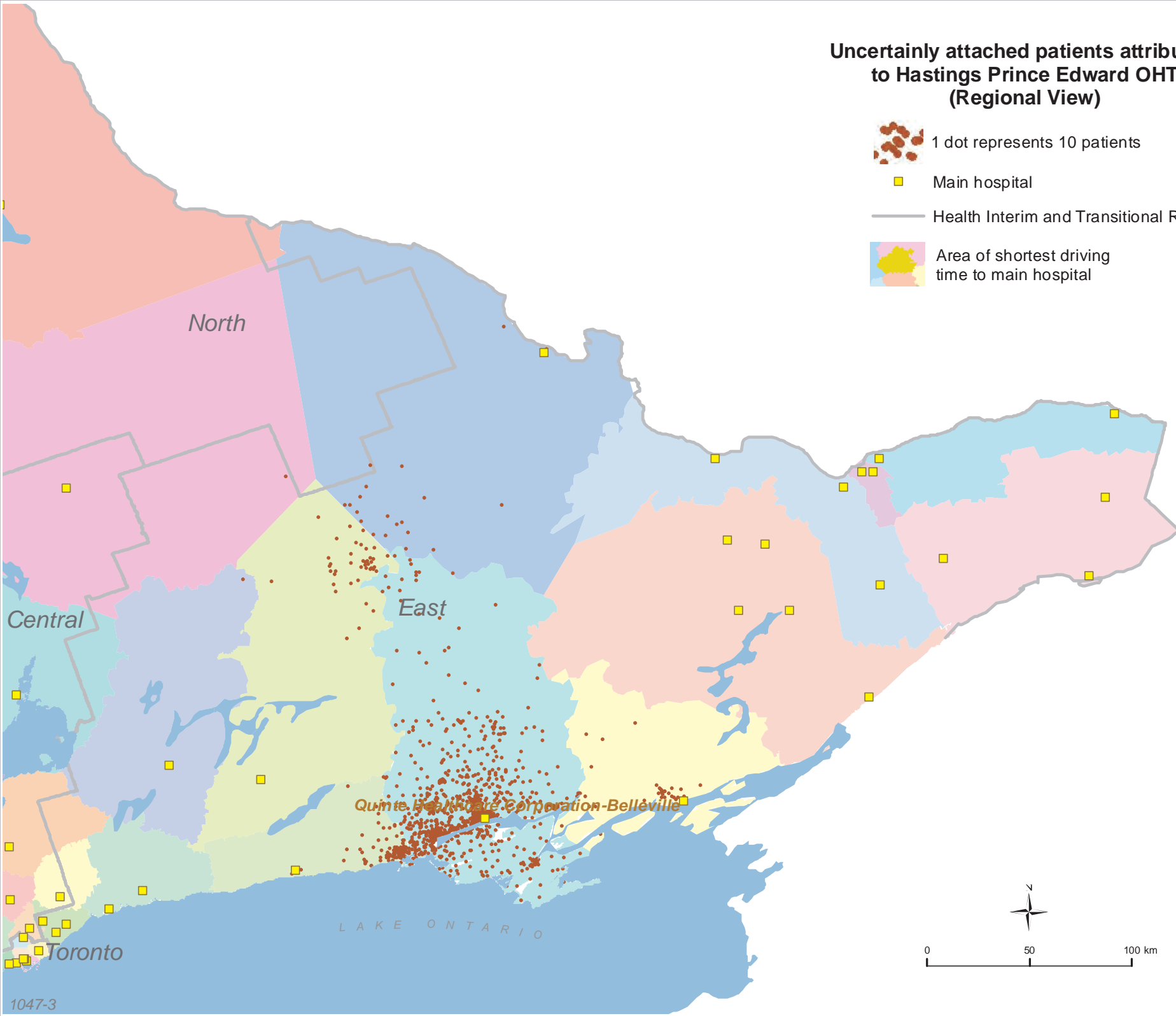
Main hospital



Health Interim and Transitional Region



Area of shortest driving time to main hospital



### Uncertainly attached patients attributed to Hastings Prince Edward OHT (Local View)



1 dot represents 10 patients



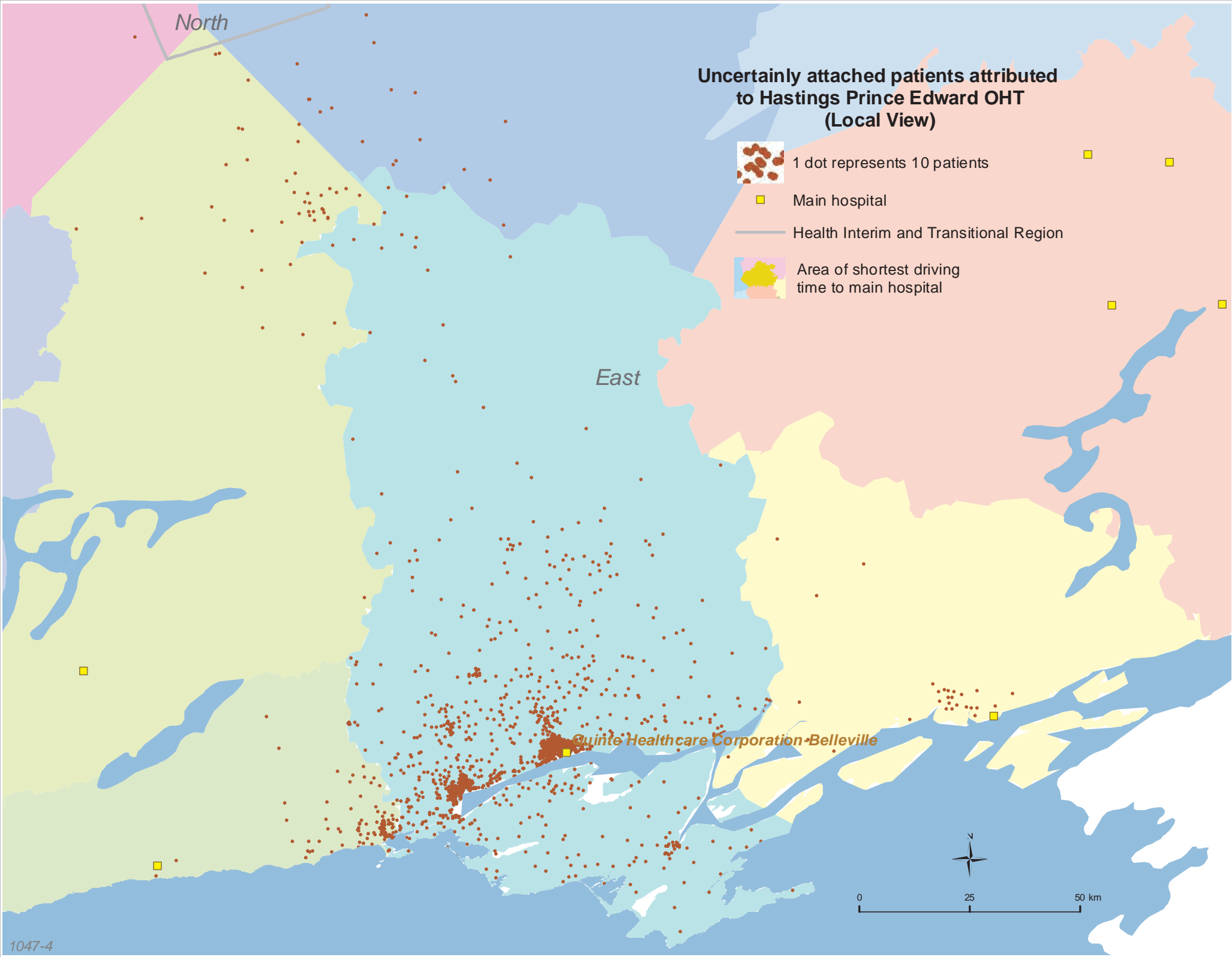
Main hospital



Health Interim and Transitional Region



Area of shortest driving time to main hospital



East

North

Quinte Healthcare Corporation - Belleville

0 25 50 km

# Uncertainly Attached Patients Attributed to Ontario Health Teams (OHT) Other Than to Hastings Prince Edward OHT (Local View)



1 dot represents 10 patients



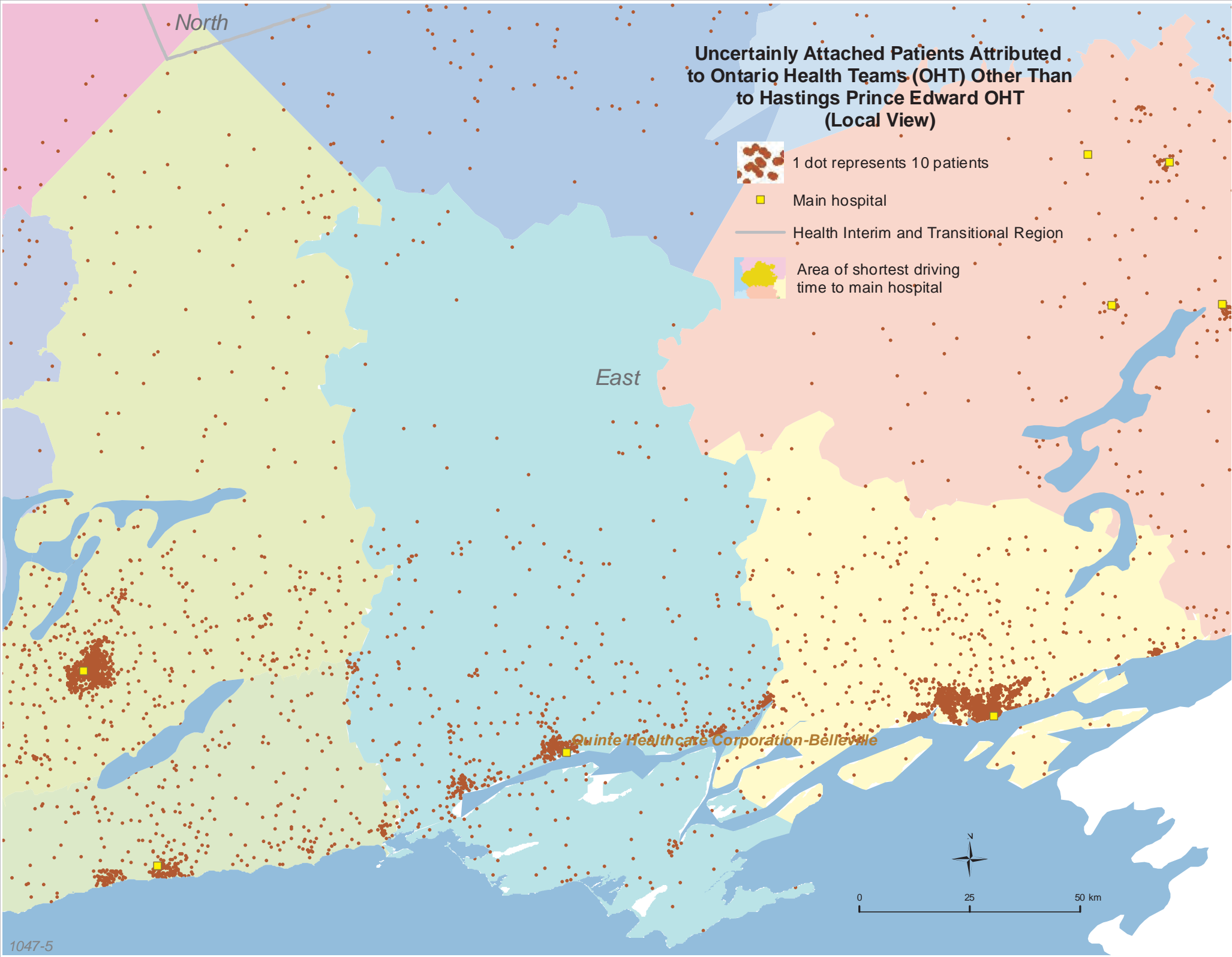
Main hospital



Health Interim and Transitional Region



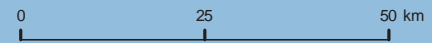
Area of shortest driving time to main hospital



East

North

Quinte Healthcare Corporation - Belleville



1047

Hastings Prince Edward OHT

All attributed patients	152731
Attributed patients attached to primary care	135532
Attributed patients uncertainly attached to primary care	17199