



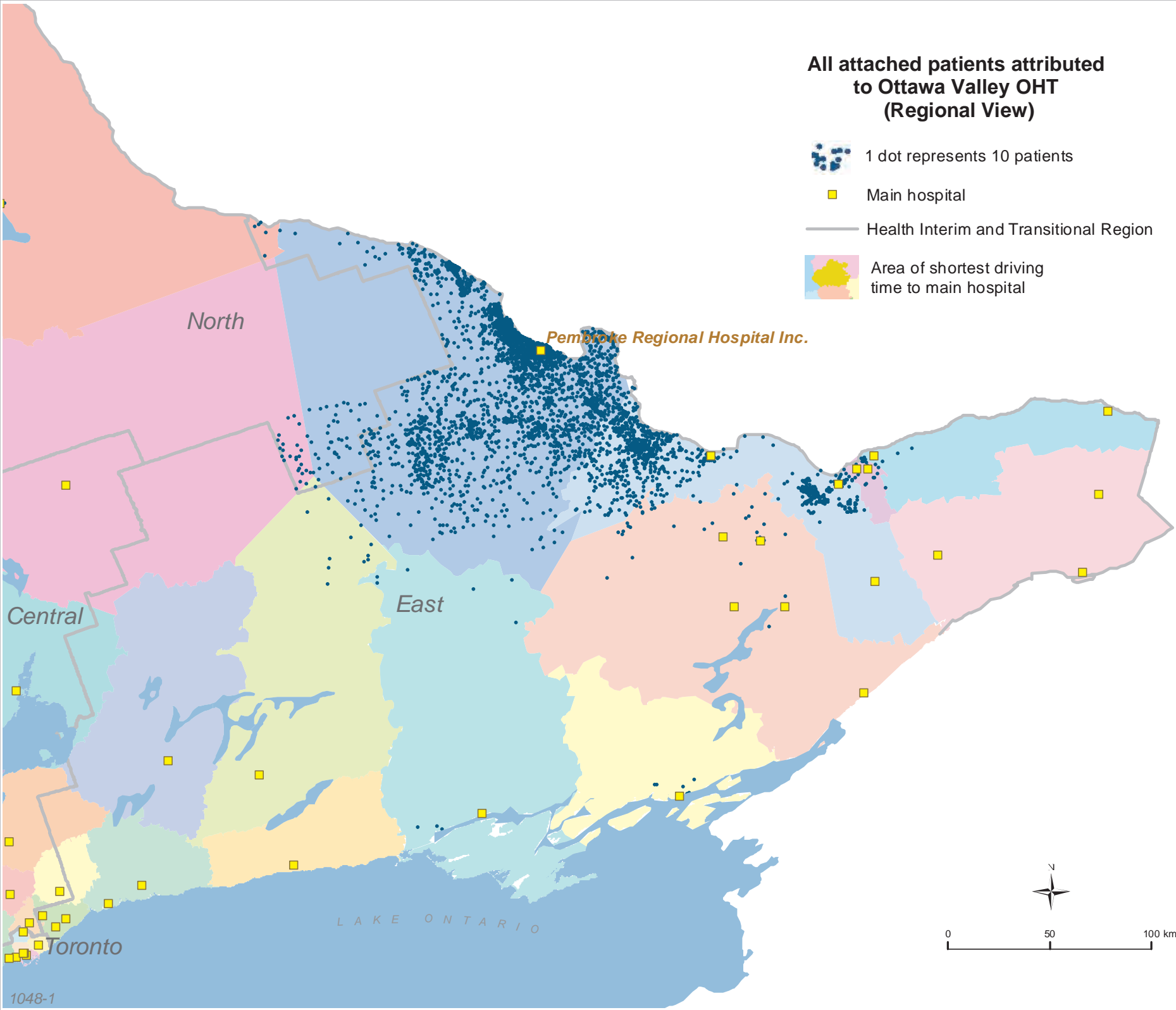


All attached patients attributed to Ottawa Valley OHT (Regional View)

-  1 dot represents 10 patients
-  Main hospital
-  Health Interim and Transitional Region
-  Area of shortest driving time to main hospital



North

Pembroke Regional Hospital Inc.





Central

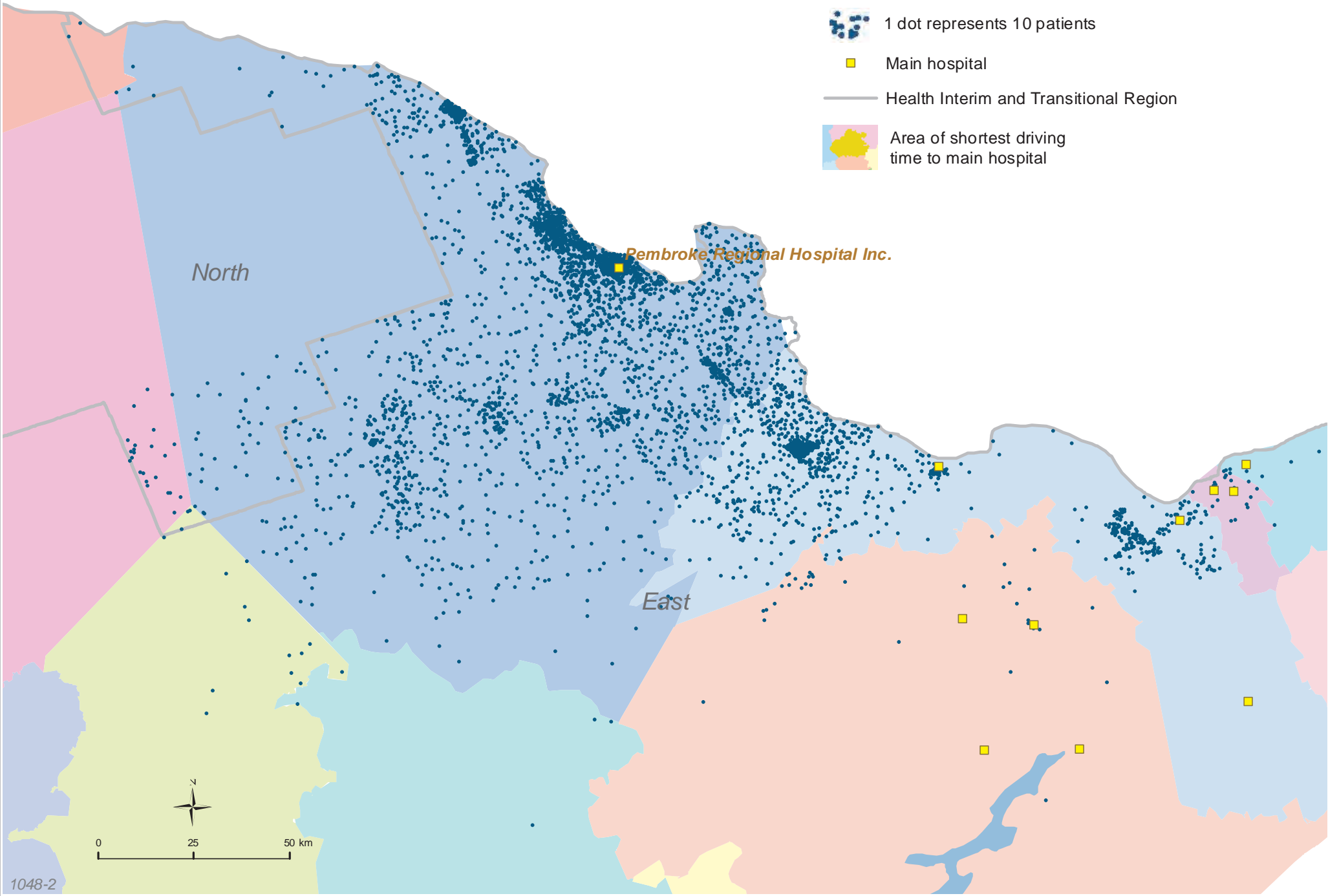
East

LAKE ONTARIO

Toronto

All attached patients attributed to Ottawa Valley OHT (Local View)

-  1 dot represents 10 patients
-  Main hospital
-  Health Interim and Transitional Region
-  Area of shortest driving time to main hospital



North

Pembroke Regional Hospital Inc.

East

0 25 50 km

Uncertainly attached patients attributed to Ottawa Valley OHT (Regional View)



1 dot represents 10 patients



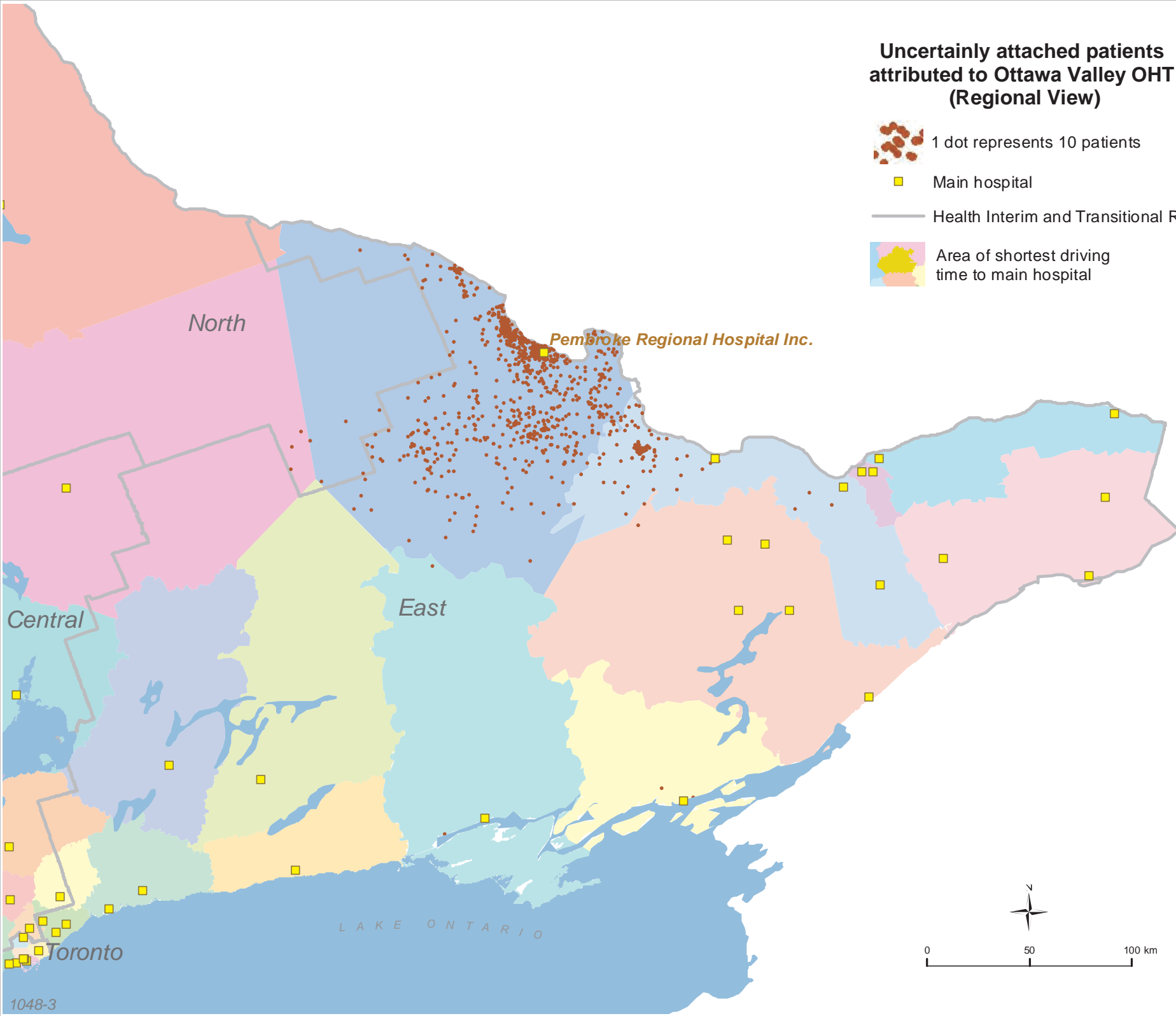
Main hospital



Health Interim and Transitional Region



Area of shortest driving time to main hospital



Pembroke Regional Hospital Inc.

North

East

Central

Toronto

LAKE ONTARIO



Uncertainly attached patients attributed to Ottawa Valley OHT (Local View)



1 dot represents 10 patients

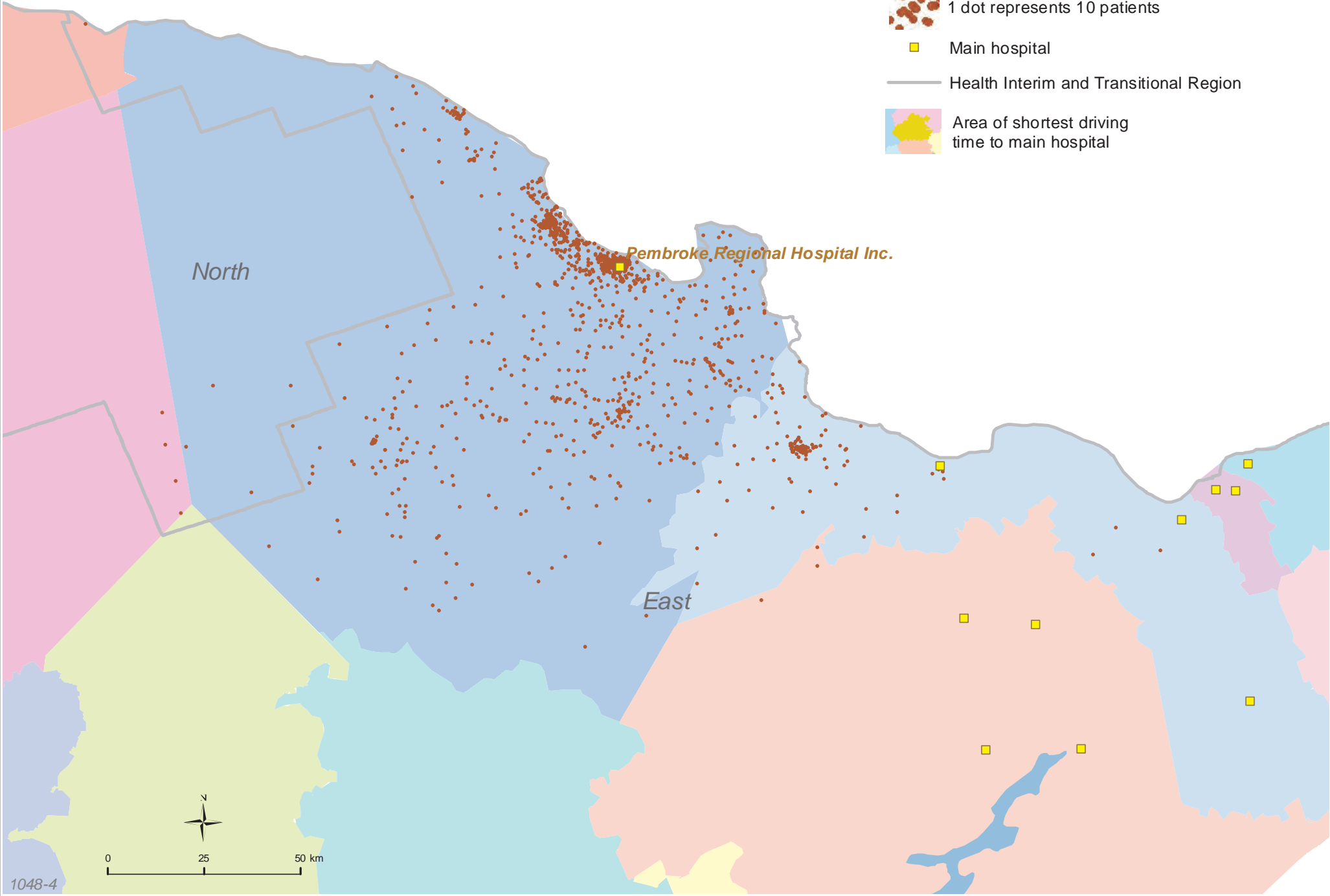


Main hospital

— Health Interim and Transitional Region



Area of shortest driving time to main hospital



Pembroke Regional Hospital Inc.

North

East



0 25 50 km

Uncertainly Attached Patients Attributed to Ontario Health Teams (OHT) Other Than Ottawa Valley OHT (Local View)



1 dot represents 10 patients



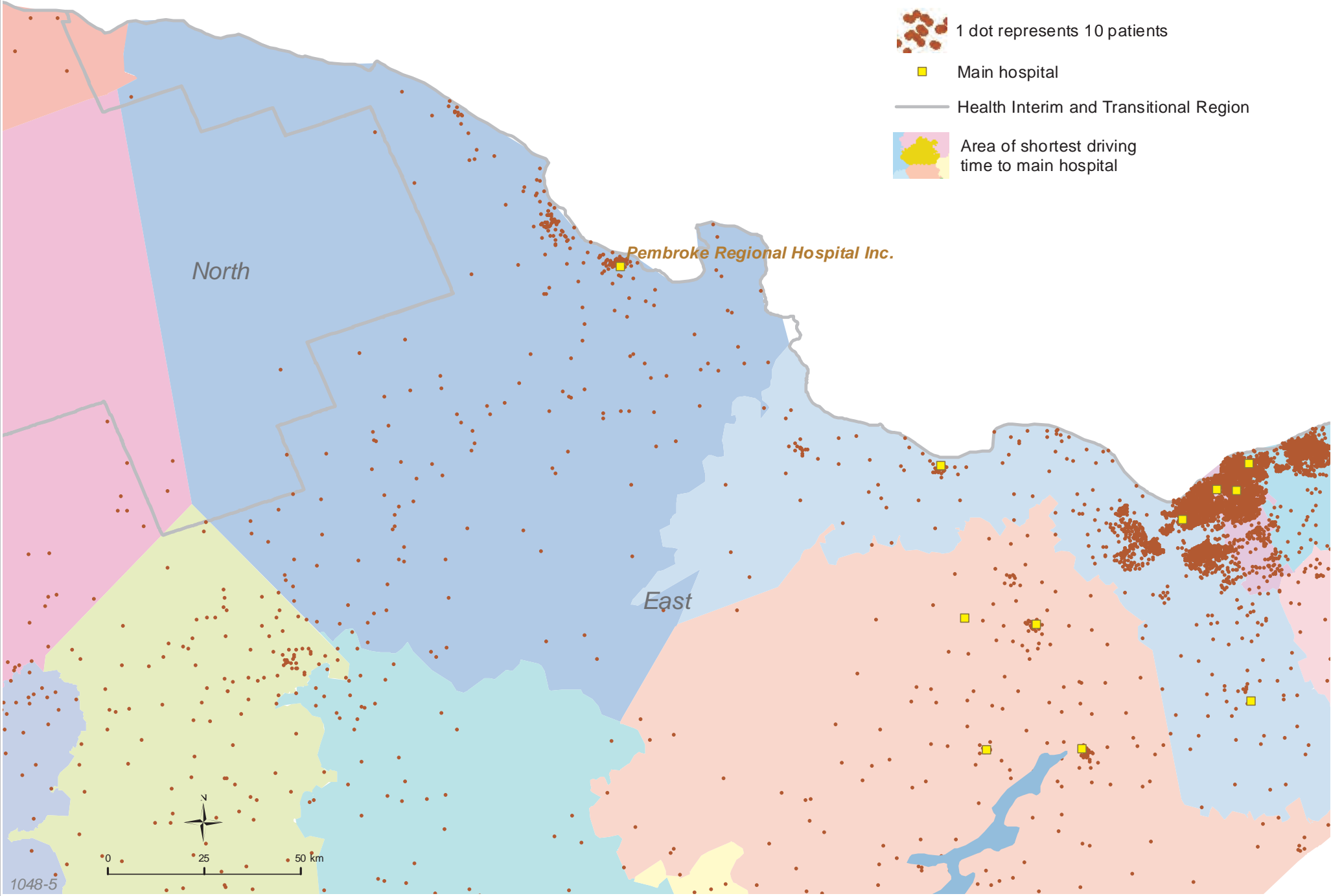
Main hospital



Health Interim and Transitional Region



Area of shortest driving time to main hospital



North

Pembroke Regional Hospital Inc.

East

0 25 50 km



1048

Ottawa Valley OHT

All attributed patients	75748
Attributed patients attached to primary care	61515
Attributed patients uncertainly attached to primary care	14233