

# Mobility Changes in Ontario Tool

## Quick Reference Guide

### Google-Data Mobility Changes in Ontario

**1** **Mobility Metric**

- Overall
- Workplaces
- Retail and Recreation
- Grocery and Pharmacy
- Mass Transit Locations
- Parks

**2** **Health Units**

- Whole Ontario
- Algoma
- Brant County
- Chatham-Kent
- Durham Region
- Eastern Ontario
- Grey-Bruce
- Halimand-Norfolk
- Haliburton, Kawartha, Pine Ridge District
- Halton Region
- City of Hamilton
- Hastings Prince Edward
- Huron-Perth
- Kingston, Frontenac, Lennox & Addington
- Lambton
- Leeds, Grenville and Lanark District
- Middlesex-London
- Niagara Region
- North Bay, Parry Sound District
- Northwestern
- Ottawa
- Peel
- Peterborough
- Porcupine
- Sudbury and Districts
- Renfrew County and District
- Simcoe Muskoka District
- Southwestern
- Thunder Bay District
- Timiskaming
- Toronto
- Region of Waterloo
- Wellington-Dufferin-Guelph
- Windsor-Essex County
- York Region

**3** **Date Range**

2020-03-01 to 2021-01-01

**4** **Degree of Smoothness**

1 25 100

1 11 21 31 41 51 61 71 81 91 100

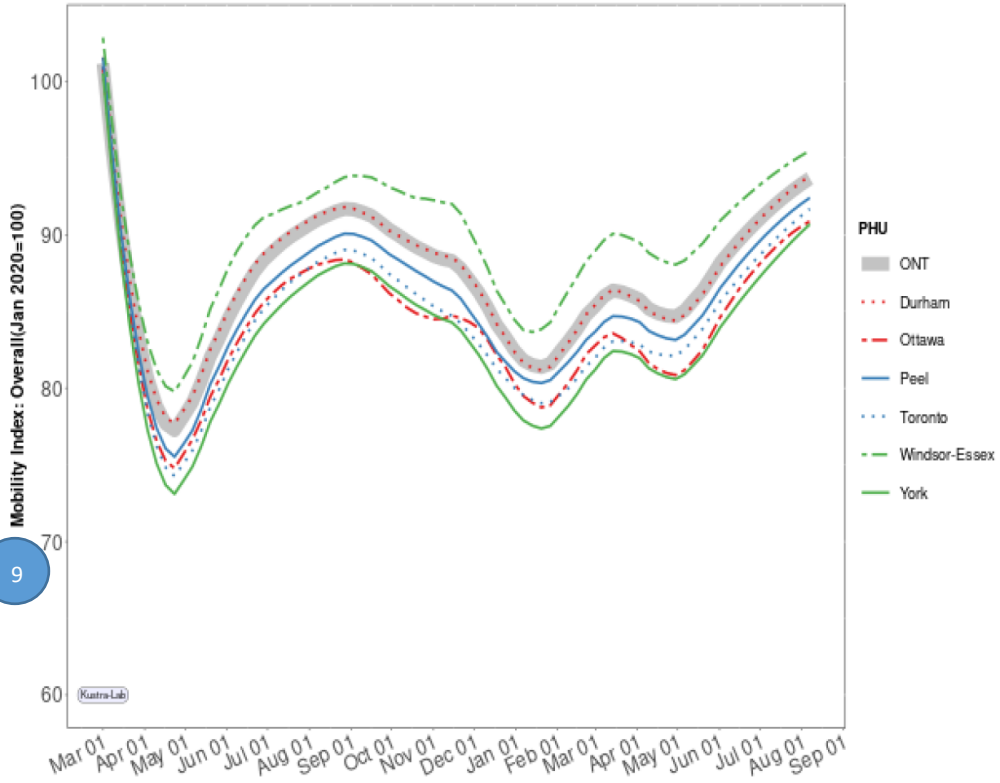
**5**  Show Policy Changes?

**6**  Show Weekdays Only?

**7**  Show Data Points?

**8**

### Changes in Overall Mobility



Developed by Kustra-Lab at Dalla Lana School of Public Health, University of Toronto. Data provided by Google Mobility Project (<https://www.google.com/covid19/mobility>)

1. **Mobility Metric.** Use this single select filter to select a specific mobility metric of interest. You can select only one metric at a time. Except for “Overall” metric, these reflect relative number of devices in or around places classified into these 5 categories. The “Overall” metric is defined as an average of the relative amount of time devices were not detected in residential areas.
2. **Health Units.** Use this multi-select filter to select the public health units to be included in the overall changes in mobility analysis. The selected public health units are indicated in the legend to the right of the output graph. The “Whole Ontario” selection adds a provincial average curve to the graph.  
*Note: Data in some health units (mostly in northern Ontario) can be sparse or non-existent in some time periods. This can result in broken curves or, for short data ranges, no curves at all, for such regions.*
3. **Date Range.** Select the start and end dates to include in the overall display of changes in mobility analysis. The date range is reflected in the x-axis of the output graph. The earliest start date possible is March 1, 2020. The latest end date possible is today but the data will likely lag 4-7 days. If the date range selected spans within a 6-month period, the labeled ticks on the x-axis are Mondays. If the date range selected spans beyond a 6-month period, the labeled ticks on the x-axis are the 1<sup>st</sup> day of each month.
4. **Degree of Smoothness.** Use this slider to select the degree of smoothness of the output graph. Smaller smoothness selection leads to rough graphs with abrupt bends and breaks, but closely following the reported data. The function of smoothing is to reduce the noise in the data (i.e., random irregularity). In the process of smoothing, individual data points higher than the immediately adjacent points are replaced with smaller values, and those that are lower are increased. Smoothing helps find real trends in data but can also hide important variations, especially near the endpoints (earliest and latest dates). The effect of this setting is dependent on the number of data points (displayed date range): longer periods need lower smoothness settings to achieve the same visual appearance as shorter periods.
5. **Policy Changes.** Select this option to display when Red zone, Lockdowns and Stay-at-Home orders were implemented in each of the public health units selected in filter in point 2.
6. **Weekdays Only Option.** Select this option to only include weekdays in the overall changes in mobility analysis. This helps suppress weekly variation present in some mobility metrics (e.g., workplaces) and is especially useful when displaying shorter date ranges and/or less smooth graphs.
7. **Data Points.** Select this option to display the individual data points in addition to curves.
8. **Refresh Data.** Re-downloads the latest data from the [Google website](#) and updates the display. (Google Mobility data is updated every 2-4 days, and latest data typically lags between 4-7 days from present day). Please use sparingly to avoid un-necessary web traffic.

9. **Mobility Index.** The mobility index is displayed in the y-axis of the output graph. A mobility index of “100” equates to the chosen mobility metric in the area as recorded in January 2020 (pre-pandemic). Since mobility is compared to the same short, specific period in time, the observed patterns reflect a number of factors, including seasonality, holiday periods, changing demographics, as well as, pandemic effects.