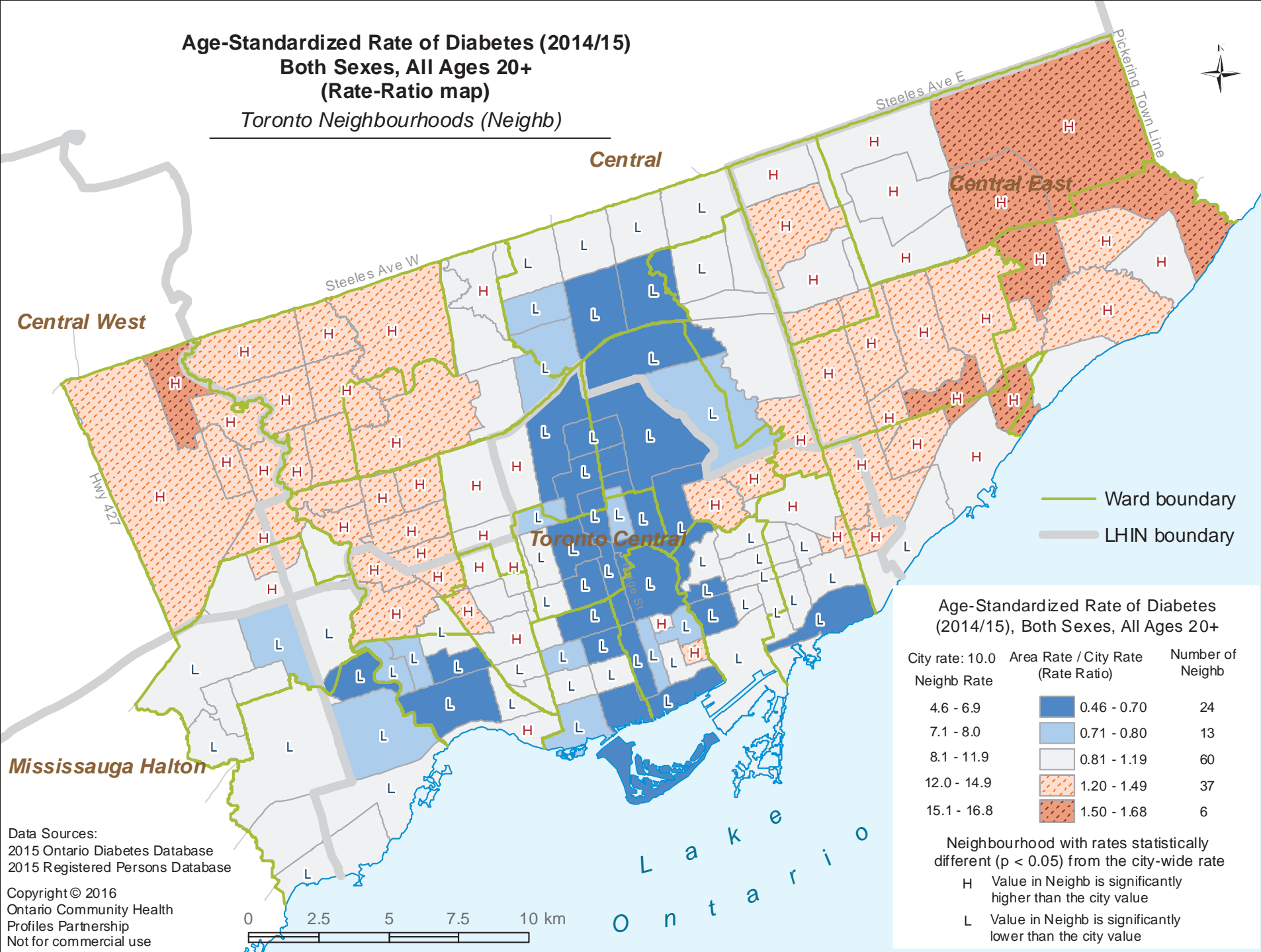


Age-Standardized Rate of Diabetes (2014/15) Both Sexes, All Ages 20+ (Rate-Ratio map)

Toronto Neighbourhoods (Neighb)



— Ward boundary
— LHIN boundary

Age-Standardized Rate of Diabetes (2014/15), Both Sexes, All Ages 20+

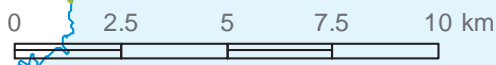
| City rate: 10.0 | Area Rate / City Rate (Rate Ratio) | Number of Neighb |
|-----------------|------------------------------------|------------------|
| Neighb Rate | | |
| 4.6 - 6.9 | 0.46 - 0.70 | 24 |
| 7.1 - 8.0 | 0.71 - 0.80 | 13 |
| 8.1 - 11.9 | 0.81 - 1.19 | 60 |
| 12.0 - 14.9 | 1.20 - 1.49 | 37 |
| 15.1 - 16.8 | 1.50 - 1.68 | 6 |

Neighbourhood with rates statistically different ($p < 0.05$) from the city-wide rate

- H Value in Neighb is significantly higher than the city value
- L Value in Neighb is significantly lower than the city value

Data Sources:
2015 Ontario Diabetes Database
2015 Registered Persons Database

Copyright © 2016
Ontario Community Health
Profiles Partnership
Not for commercial use



L a k e r i o
O n t a r i o