



Ontario Community Health Profiles Partnership

**Annual All-Partners
Meeting
January 26 2018**



Welcome and Introductions



Today's Agenda



Brief Overview of the OCHPP



Current Partners

- **St. Michael's Hospital, Centre for Urban Health Solutions**
- **Toronto Central Local Health Integration Network (TCLHIN)**
- **Central Local Health Integration Network (CLHIN)**
- **Toronto Public Health**
- **Wellesley Institute**
- **The Southeast Toronto Project (SETo)**
- **Access Alliance Multicultural Health & Community Services**
- **Institute for Clinical Evaluative Sciences (ICES)**
- **Wellbeing Toronto**



Overall Goals of the Partnership

- Foster **collaborations & partnerships** between health services providers, researchers and policy-makers
- Facilitate **access to health information** to support planning
- Maximize the **effective use of system resources** for planning
- **Increase capacity** of health service providers to use health information
- Deepen **understanding of health inequities** and how to measure, monitor and reduce them



Focus of the Partnership

- **Vulnerable populations**
- **Neighbourhood-level areas with greatest health needs**
- **Translation and cultural interpretation priorities**
- **Barriers to care**
- **Equity**



OCHPP Website

Partners decided that a freely accessible, open portal website would be an ideal way to allow access to the data.

- **Frequently updated**
- **Easy to read and download tables & maps**
- **Rigorous data standards**
- **Standard definitions**
- **Data documents for information**
- **Customized functionality for partners**
- **Numerous resources**



The website/project assists communities and health services providers in the following ways

- **Reduces duplication** of work
- **Maximizes efficiency and productivity** by collaborating and sharing
- Site uses **common** definitions, data standards, methods, quality assurance
- Creates a **single point of access** for health indicators **on website**
- Project staff provides **information and training**



What data are on the website?

- **Socio-demographic Data (income, language etc.)**
- **Registered Persons Population Denominators**
- **Hospital Admissions (various types of admissions/discharges)**
- **Emergency Department Visits (including triage level & MH EDV)**
- **Adult Health and Disease (diabetes, asthma, COPD etc.)**
- **Prevention (cancer screening)**
- **Sexual Health (STIs)**
- **Mothers & Babies (birth rates, mother's country of origin etc.)**
- **Children & Youth (asthma, injuries)**
- **Ontario Marginalization Index (updated index coming soon!)**
- **Primary Care (Enrollment & Continuity In Care) & Interprofessional Teams**
- **Injuries**
- **Children & Youth**
- **Palliative Care**



Numerous data sources

- **Physician services (OHIP)**
- **Hospitalizations (CIHI, OMHRS)**
- **Emergency Department visits (NACRS)**
- **Vital Statistics (Office of the Registrar General of Ontario)**
- **Specialized databases (Cytobase, Ontario Breast Screening Program)**
- **Chronic disease provincial registries (Diabetes, Asthma, COPD, ODD etc.)**
- **Census (recent census data 2016)**
- **Immigration data (IRCC) linked to health services use**
- **Numerous geographic datasets**
- **Partner data from Toronto Public Health (e.g. STI, Mortality)**
- **Other sources of data made available to us**



Who Uses the Site?

- **Health service providers e.g. community health centre & agency staff**
- **Local Health Integration Network staff**
- **Sub-region staff**
- **Researchers**
- **Students**
- **General public**
- **Numerous email requests for data/questions**
- **Usage statistics indicate site is accessed from many different places in North America/world**



Work Plan Review



Partner Discussion re Work Plan

Partner Updates – 5 minutes each



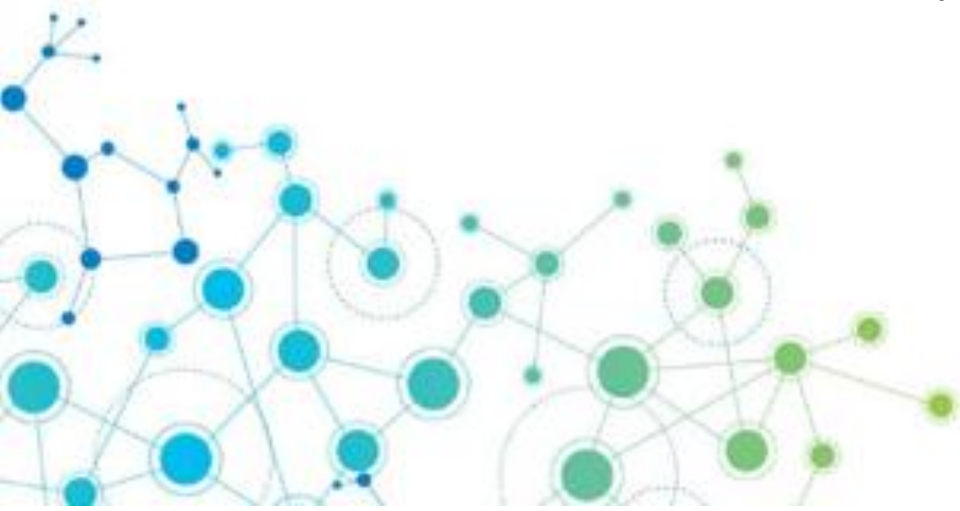
Population Health Solutions Lab

The Team/The Project

The Population Health Solutions Lab

Sophia Ikura, Executive Director

OCHPP Partners Meeting
January 25, 2018



The Population Health Solutions Lab

The Population Health Solutions Lab is a [design and development shop](#) for solutions that improve the health and wellness of diverse populations.

Launched in Fall 2017, the Lab is hosted at the Sinai Health System, Bridgepoint site, in the heart of Toronto's Riverdale community.

The Lab is guided by a committee of [contributing partners](#) including Sinai Health System, the Toronto Central LHIN, The Dalla Lana School of Public Health at the University of Toronto, Toronto Public Health, MOHLTC, The Wellesley Institute, and St. Michael's Hospital.

To serve the needs of target populations, the Lab assembles [networks of partners](#) around a shared purpose – including LHINs, health and social service providers,

public health units, municipal bodies, and other community-based agencies – to [co-design solutions](#) informed by population needs and evidence.

The Lab's initial portfolio of projects targets the needs of specific populations including seniors living alone, residents in social housing, and individuals experiencing opioid addiction.

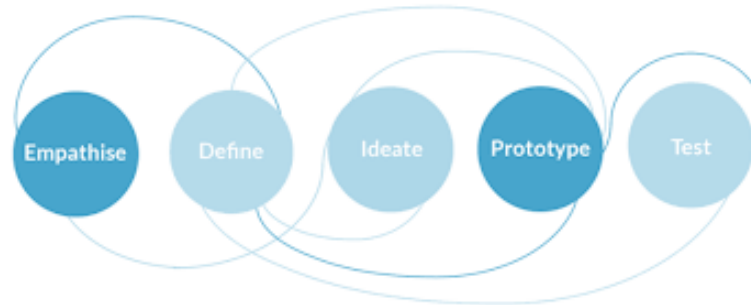
The Lab is also developing [tools for system partners](#) like primary care physicians and LHIN planners to enable them to better understand the populations they serve.

To learn more, contact Sophia.Ikura@SinaiHealthSystem.ca



The Lab's approach to solution development

We apply [design methods](#) to deeply explore and understand end-user needs, engage multi-sector partner networks in solution development, and rapidly develop prototypes for iteration.

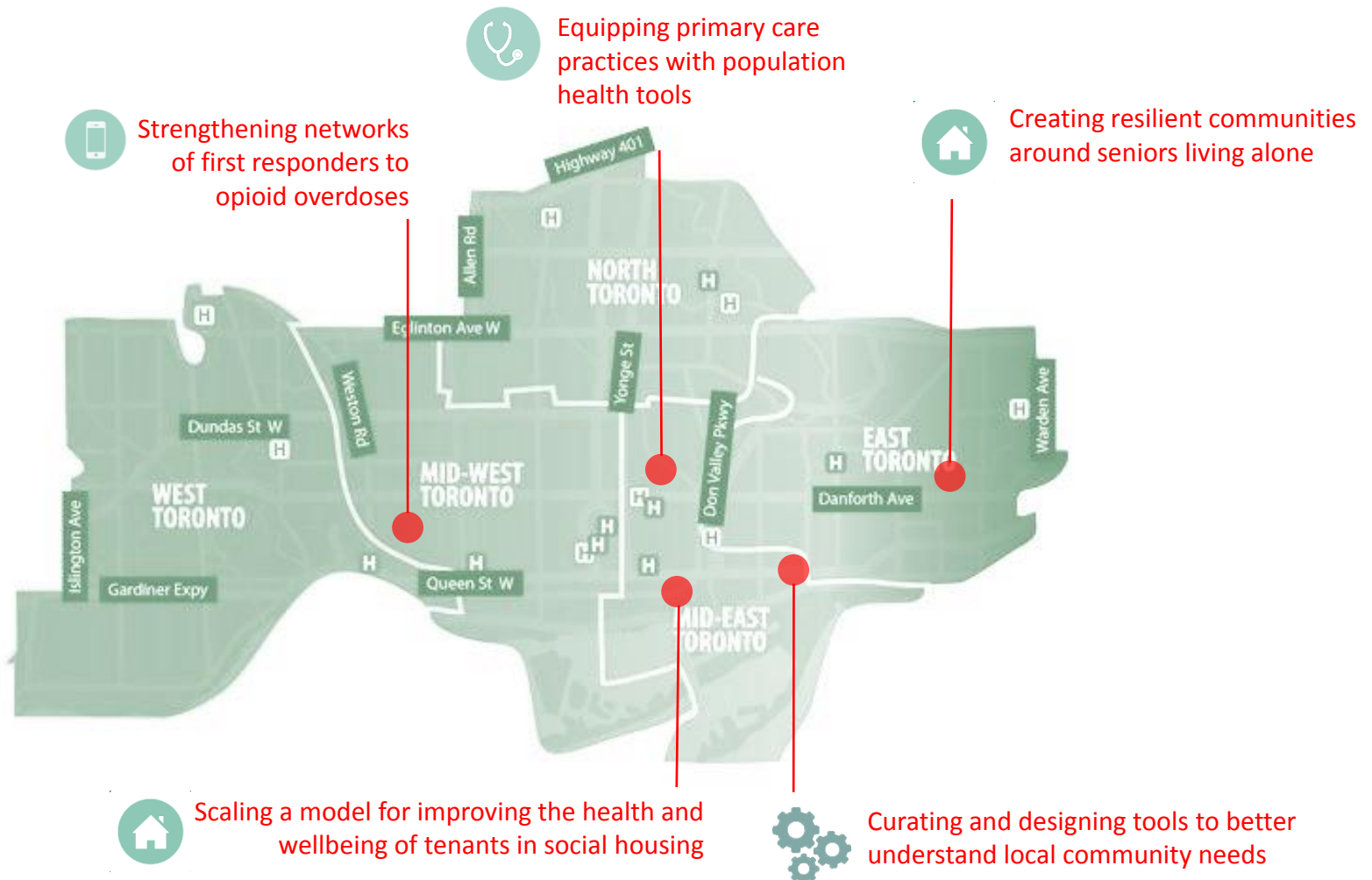


Our [development platform](#) is based on a philosophy of “process as product” where we package and share our *knowledge and tools* while on the journey to solution *implementation*. The Lab has a mandate to support the active transfer of knowledge and solutions to support partners in serving the needs of target populations.



Once a solution has been designed, prototyped and tested with early implementation, we complete a “[warm hand-off](#)” to system partners to sustain the change.

Our initial portfolio of projects



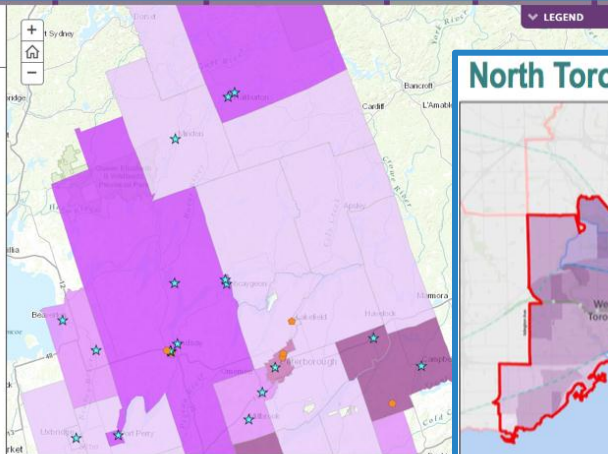
Local innovation among LHINs ...

Strategic Aims

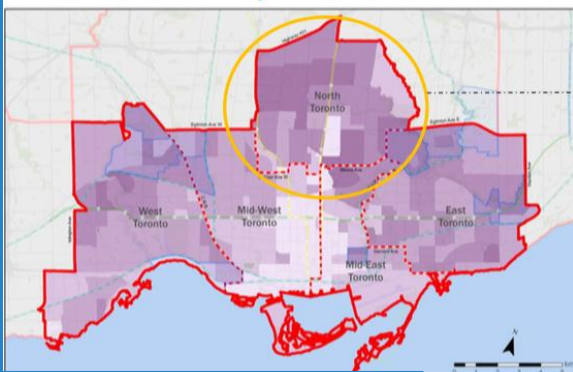
- Scarborough North Neighbourhoods
- Scarborough South Neighbourhoods
- Comparative Data Tables for Neighbourhoods, sub-regions and Central East LHIN

MH&A Aim - Patient transfers from LTCH to ED for individuals with MH diagnosis (65+ population) with LTCHs with BSO funding

- Durham North East Neighbourhoods
- Durham West Neighbourhoods
- Haliburton County and City of Kawartha Lakes
- Neighbourhoods
- Northumberland County Neighbourhoods
- Peterborough City and County Neighbourhoods

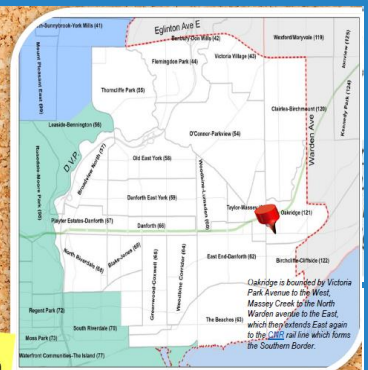
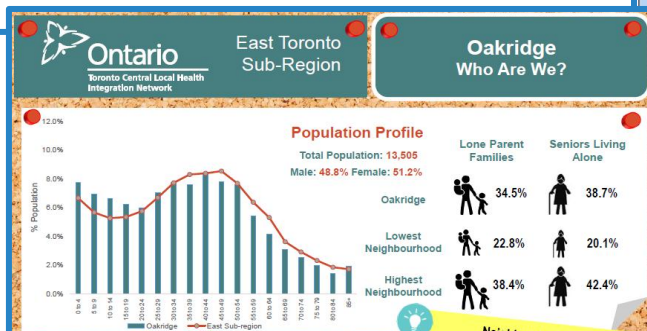
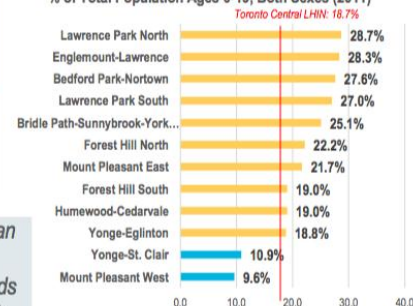


North Toronto: Population of Children and Youth (2011)

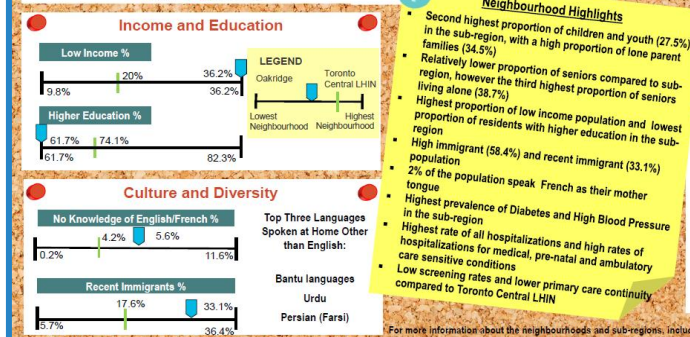


North Toronto had higher proportion of children and youth (ages 0-19 years) in 2011 (20.3%) relative to Toronto Central LHIN (18.7%).

% of Total Population Ages 0-19, Both Sexes (2011)



age % of children than
North neighbourhoods
neighbourhoods in North

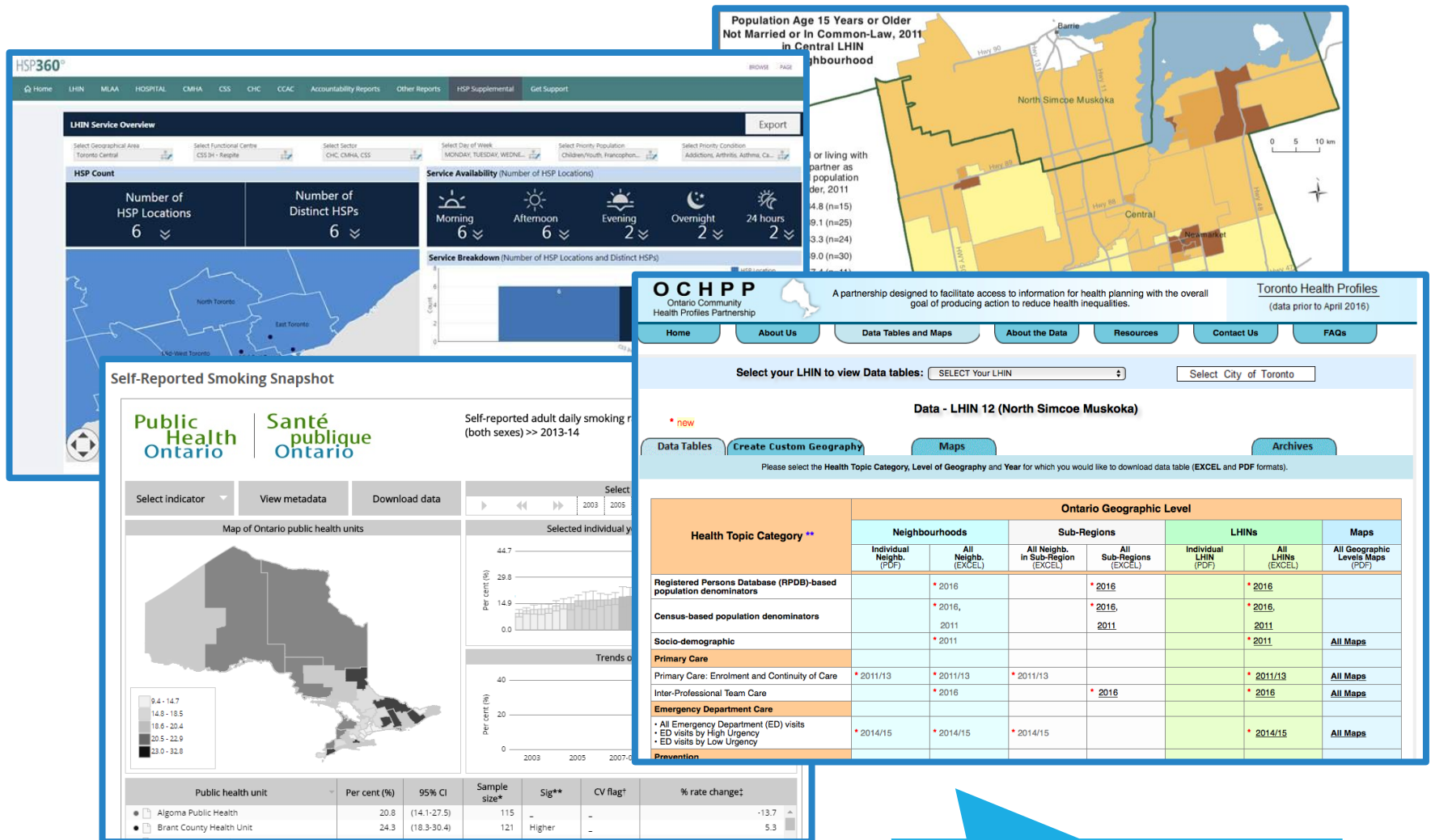


Health Status

	Prevalence Rate (%)	Neighbourhood Ranges (%)	Toronto Central LHIN Rate (%)
Diabetes (Ages 20+)	14.7	5.0 – 14.7	8.4
Asthma (Ages 20+)	12.8	9.5 – 16.7	12.7
High Blood Pressure (Ages 20+)	25.2	15.3 – 25.2	18.3
Mental Health & Substance Use Visits (Ages 20+)	11.2	8.3 – 12.0	9.4
COPD (Ages 35+)	11.5	6.7 – 12.3	8.6

How can LHINs build on this capacity?

... and work underway across Ontario



How can LHINs benefit from all this data?



Update on change from Census to RPDB



- Hospitalization and emergency department visit indicator rates were previously calculated using Census data as the population source (denominator) and the Registered Persons Database (RPDB) for the numerator.**
- These were the only two health indicators generated this way.**
- We recently changed the method to calculate rates for these two indicators to RPDB as the source for both the denominator & the numerator.**
- Now all health indicators on OCHPP align using this method**



Your Questions re Census to RPDB

5 minutes

***(More time after the meeting for
additional questions)***



City of Toronto Presentation on Proposed Neighbourhood Changes



Wrap Up